

TECHNICAL MANUAL

ORGANIZATIONAL, DIRECT SUPPORT,
AND GENERAL SUPPORT MAINTENANCE
REPAIR PARTS AND SPECIAL TOOLS LIST

FOR

POWER SUPPLIES

PP-3990/FRC-93 (NSN 5820-00-034-4234),

PP-4151/FRC-93 (NSN 5820-00-034-4239),

PP-4765/GRC-159(V) (NSN 6130-00-926-7805),

AND

MP-1 (NSN 5820-00-034-4233),

HEADQUARTERS, DEPARTMENT OF THE ARMY

March 1981



**ORGANIZATIONAL, DIRECT SUPPORT, AND GENERAL SUPPORT
 MAINTENANCE REPAIR PARTS AND SPECIAL TOOLS LIST**

FOR

POWER SUPPLIES

**PP-3990/FRC-93 (NSN 5820-00-034-4234),
 PP-4151/FRC-93 (NSN 5820-00-034-4239),
 PP-4765/GRC-159(V) (NSN 6130-00-926-7805),
 AND
 MP-1 (NSN 5820-00-034-4233),**

Current as of 4 September 1980

REPORTING ERRORS AND RECOMMENDING IMPROVEMENTS

You can help improve this manual. If you find any mistakes or If you know of a way to Improve the procedures, please let us know. Mail your letter, DA Form 2028 (Recommended Changes to Publications and Blank Forms), or DA Form 2028-2 located in back of this manual direct to Commander US Army Communications and Electronics Materiel Readiness Command ATTN: DRSEL-ME-MQ, Fort Monmouth, NJ 07703. In either case, a reply will be furnished direct to you.

TABLE of CONTENTS

		Page	Illus Figure
SECTION	I. Introduction.....	1	
	II. Repair Parts List	5	
GROUP	00 Power Supply PP-3990/FRC-93	5	1
	Power Supply PP-3990/FRC-93, Front and Rear Views	9	2
	Power Supply PP-3990/FRC-93, Chassis Assembly	13	3
	Power Supply PP-3990/FRC-93, Installation Kit	17	4
	00 Power Supply PP-4151/PRC-93.....	19	5
	Power Supply PP-4151/FRC-93,Chassis Assembly	23	6
	00 Power Supply PP-4765/GRC-159(V).....	27	7
	Power Supply PP-4765/GRC-159(V),, Cover Removed	31	8
	00 Power Supply MP-1	33	9
	Power Supply MP-1, Left and Right Views.....	37	10
	Power Supply MP-1, Rear View	39	11
	Power Supply MP-1, Top View	41	12
	Power Supply MP-1, Accessory Kit	43	13
SECTION	III. Special Tools List (Not applicable)		
	IV. National stock number and part number index	44	

SECTION I INTRODUCTION

1. Scope

This manual lists spares and repair parts; special tools; special test, measurement, and diagnostic equipment (TMDE), and other special support equipment required for performance of organizational, direct support, and general support maintenance of the PP-3990/FRC-93, PP -4151/FRC-93, PP 4765/GRC-159(V) and MP-1. It authorizes the requisitioning and issue of spares and repair parts as indicated by the source and maintenance codes.

2. General

This Repair Parts and Special Tools List is divided into the following sections:

a. Section II. Repair Parts List. A list of spares and repair parts authorized for use in the performance of maintenance. The list also includes parts which must be removed for replacement of the authorized parts. Parts lists are composed of functional groups in numeric sequence, with the parts in each group listed in figure and item number sequence.

b. Section III. Special Tools List. Not applicable.

c. Section IV. National Stock Number and Part Number Index. A list, in National item identification number (NIIN) sequence, of all National stock numbers (NSN) appearing in the listings, followed by a list, in alphanumeric sequence, of all part numbers appearing in the listings. National stock numbers and part numbers are cross-referenced to each illustration figure and item number appearance.

3. Explanation of Columns

a. Illustration. This column is divided as follows:

(1) *Figure number.* Indicates the figure number of the illustration on which the item is shown.

(2) *Item number.* The number used to identify item called out in the illustration.

b. Source, Maintenance, and Recoverability (SMR) Codes.

(1) *Source code* Source codes indicate the manner of acquiring support items for maintenance, repair, or overhaul of end items. Source codes are entered in the first and second positions of the Uniform SMR Code format as follows:

<i>Code</i>	<i>Definition</i>
PA-	Item procured and stocked for anticipated or known usage.
XD-	A support item that is not stocked. When re-

quired, item will be procured through normal supply channels.

NOTE

Cannibalization or salvage may be used as a source of supply for any items source coded above except those coded XA and aircraft support items as restricted by AR 700 42.

(2) *Maintenance code.* Maintenance codes are assigned to indicate the levels of maintenance authorized to USE and REPAIR support items. The maintenance code are entered in the third and fourth positions of the Uniform SMR Code format as follows:

(a) The maintenance code entered in the third position will indicate the lowest maintenance level authorized to remove, replace, and use the support item. The maintenance code entered in the third position will indicate one of the following levels of maintenance:

<i>Code</i>	<i>Application/Explanation</i>
O-	Support item is removed, replaced, used at the organizational level
F-	Support item is removed, replaced, used at the direct support level

(b) The maintenance code entered in the fourth position indicates whether the item is to be repaired and identifies the lowest maintenance level with the capability to perform complete repair (i.e., all authorized maintenance functions). This position will contain one of the following maintenance codes:

<i>Code</i>	<i>Application/Explanation</i>
O-	The lowest maintenance level capable of complete repair of the support item is the organizational level
F-	The lowest maintenance level capable of complete repair of the support item is the direct support level.
Z-	Nonreparable. No repair is authorized.

(3) *Recoverability code.* Recoverability codes are assigned to support items to indicate the disposition action on unserviceable items. The recoverability code is entered in the fifth position of the Uniform SMR Code format as follows:

<i>Recoverability codes</i>	<i>Definition</i>
Z-	Nonreparable item. When unserviceable, condemn and dispose at the level indicated in position 3.
O-	Reparable item. When uneconomically reparable,

TM 11-5820-554-24P-4

condemn and dispose at organizational level.

F- Reparable item. When uneconomically reparable, condemn and dispose at the direct support level.

c. *National Stock Number*. Indicates the National stock number assigned to the item and will be used for requisitioning purposes.

d. *Part Number*. Indicates the primary number used by the manufacturer (individual, company, firm, corporation, or Government activity), which controls the design and characteristics of the item by means of its engineering drawings, specifications, standards, and inspection requirements to identify an item or range of items.

NOTE

When a stock numbered item is requisitioned, the repair part received may have a different part number than the part being replaced.

e. *Federal Supply Code for Manufacturer (FSCM)*. The FSCM is a S-digit numeric code listed in SB 708-41/42 which is used to identify the manufacturer, distributor, or Government agency, etc.

f. *Description*. Indicates the Federal item name and, if required, a minimum description to identify the item.

g. *Unit of Measure (U/M)*. Indicates the standard of the basic quantity of the listed item as used in performing the actual maintenance function. This measure is expressed by a two-character alphabetical abbreviation (e.g., ea, in, pr, etc.). When the unit of measure differs from the unit of issue, the lowest unit of issue that will satisfy the required units of measure will be requisitioned.

h. *Quantity Incorporated in Unit*. Indicates the quantity of the item used in the breakout shown on the illustration figure, which is prepared for a functional group, subfunctional group, or an assembly. A "V" appearing in this column in lieu of a quantity indicates that no specific quantity is applicable, (e.g., shims, spacers, etc.).

4. Special Information

a. Usable on codes are shown in the description column. Uncoded items are applicable to all models. Iden-

tification of the usable on codes used in this publication are:

Code	Used on
5GI	PP-3990/GRC-93
5GJ	PP-4151/GRC-93
5GK	PP-4765/GRC-159(V)
5HZ	MP-1

b. The following publication pertains to the PP-3990/FRC-93, PP-4151/FRC-93, PP-4765/GRC159(V) and MP-1 and their components:

TM 11-5820-554-34-4, Power Supply PP-3990/FRC-93 (Collins PM-2), PP-4151/FRC-93 (Collins 516F-2), PP-4765/GRC-159(V) (Collins 516E-2) and 12 Volt Input (Collins MP-1).

5. How to Locate Repair Parts

a. When National stock number or part number is unknown.

(1) *First*. Using the table of contents, determine the functional group within which the item belongs. This is necessary since illustrations are prepared for functional groups and listings are divided into the same groups.

(2) *Second*. Find the illustration covering the functional group to which the item belongs.

(3) *Third*. Identify the item on the illustration and note the illustration figure and item number of the item.

(4) *Fourth*. Using the Repair Parts Listing, find the figure and item number noted on the illustration.

b. When National stock number or part number is known.

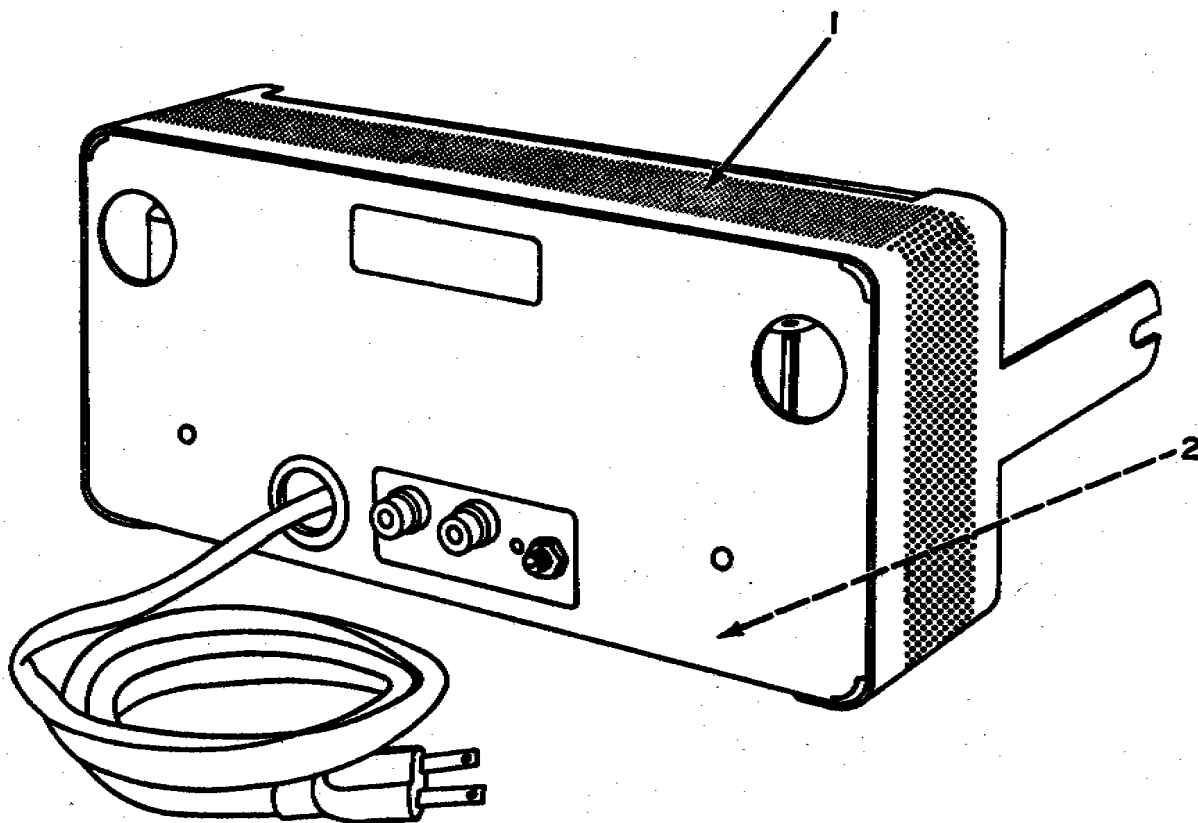
(1) *First*. Using the Index of National Stock Numbers and Part Numbers find the pertinent National stock number or part number. This index is in NIIN sequence followed by a list of part Numbers in alphameric sequence, cross-referenced to the illustration figure number and item number.

(2) *Second*. After finding the figure and item number locate the figure and item number in the repair parts list.

6. Abbreviations :

Not applicable.

(Next printed page is 4)



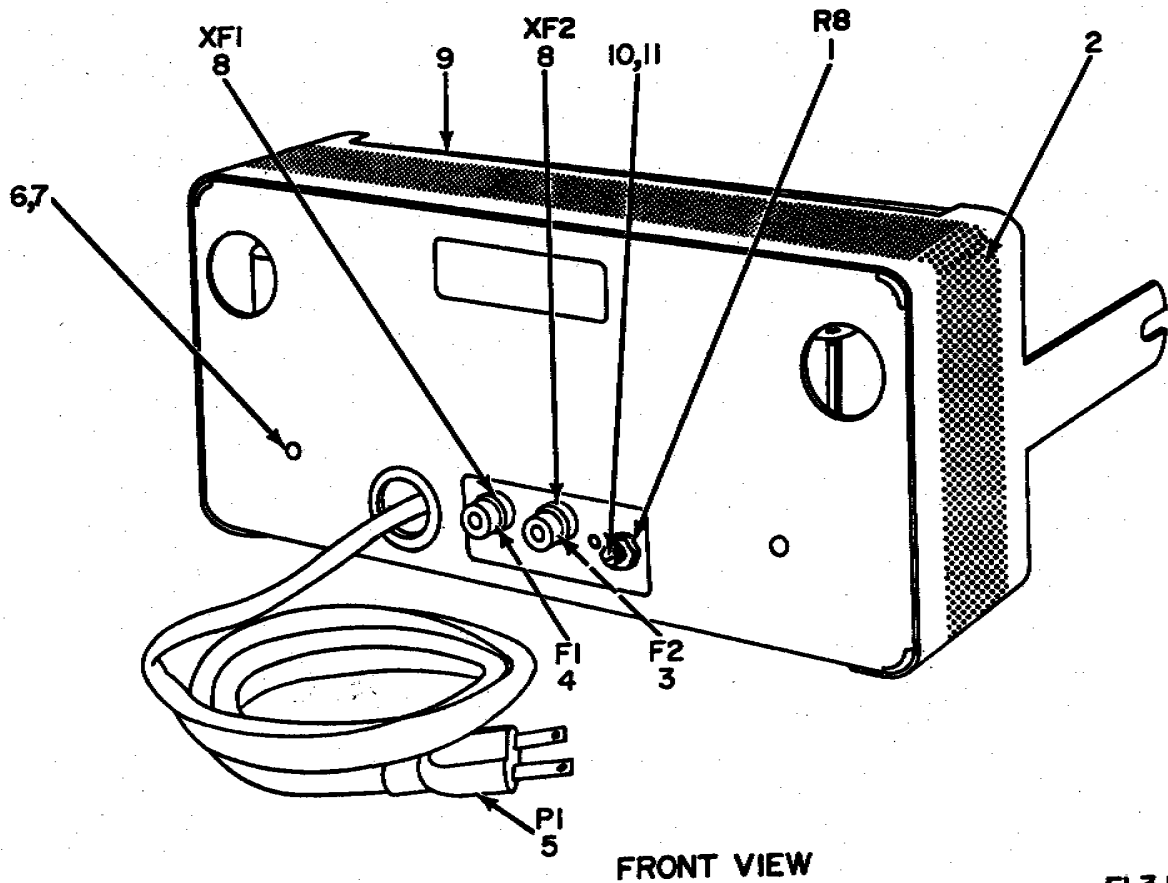
EL3JZ001

Figure 1 . Power Supply PP-3990/FRC-93.

SECTION II

TM 11-5820-554-24P-4

(1) ILLUSTRATION		(2)	(3)	(4)	(5)	(6)	(7)	(8)
(a) FIG NO.	(b) ITEM NO.	SMR CODE	NATIONAL STOCK NUMBER	PART NUMBER	FSCM	DESCRIPTION <i>USABLE ON CODE</i>	U/M	QTY INC IN UNIT
						GROUP 00 POWER SUPPLY PP-3990/FRC-93		
1	1	XDFFF		548-9452-004	13499	CASE, POWER SUPPLY5GI	EA	1
1	2	XDFFF		548-9454-005	13499	CHASSIS, ELECTRICAL5GI	EA	1



EL3JZ002

Figure 2. Power Supply PP-3990/FRC-93 , Front and Rear Views (Sheet 1 of 2).

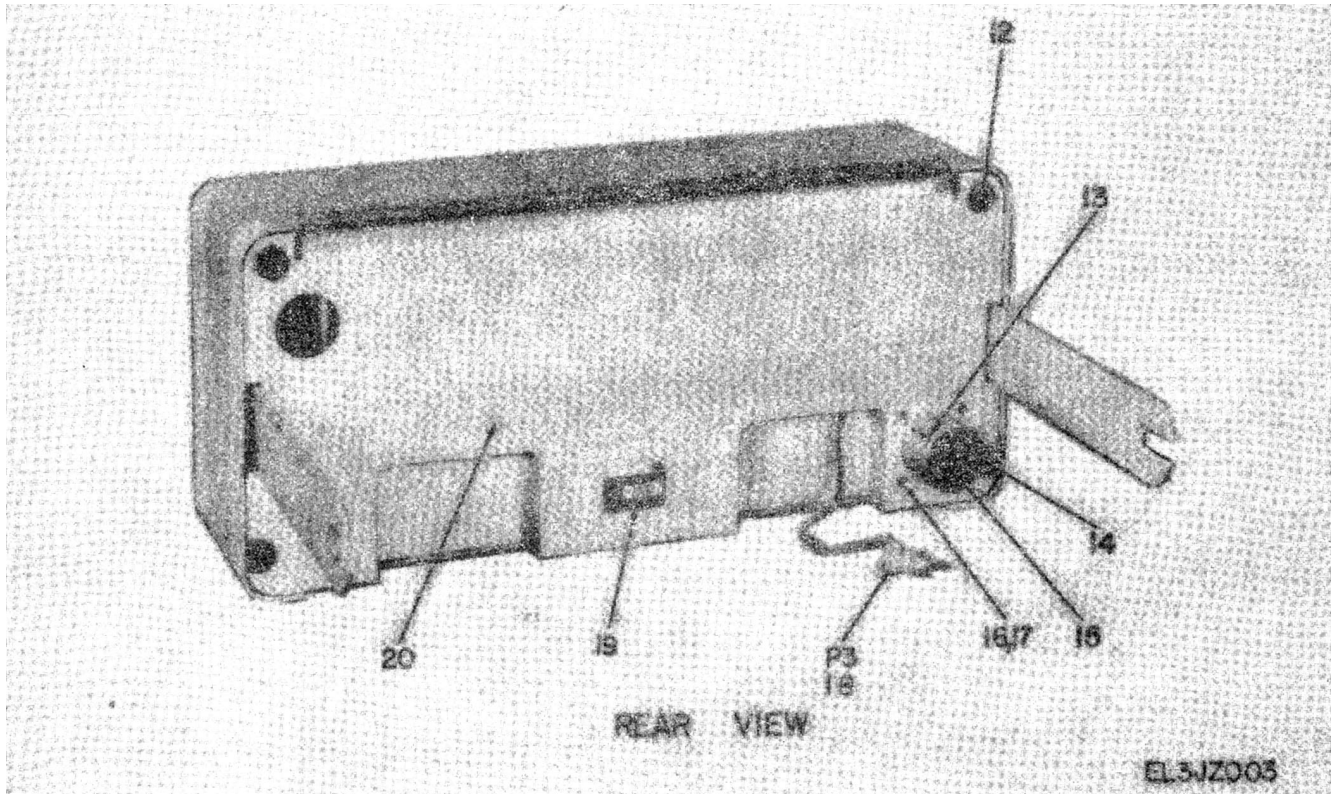


Figure 2. Power Supply PP-3990/FRC-93, Front and Rear Views
(Sheet 2 of 2).

SECTION II

TM 11-5820-554-24P-2

(1) ILLUSTRATION		(2)	(3)	(4)	(5)	(6)	(7)	(8)
(a) FIG NO.	(b) ITEM NO.	SMR CODE	NATIONAL STOCK NUMBER	PART NUMBER	FSCM	DESCRIPTION <i>USABLE ON CODE</i>	U/M	QTY INC IN UNIT
2	1	XDFZZ		377-0310-000	12697	RESISTOR, VARIABLE5GI	EA	1
2	2	XDFZZ		548-9451-004	13499	CASE, POWER SUPPLY5GI	EA	1
2	3	PAOZZ	5920-00-281-0210	F02A250V4AS	81349	FUSE, CARTRIDGE5GI	EA	1
2	4	PAOZZ	5920-00-474-6125	F02A250V2AS	81349	FUSE, CARTRIDGE5GI	EA	1
2	5	PAFZZ	6150-00-809-8126	17406	70903	CABLE, ASSEMBLY, POWE5GI	EA	1
2	6	PAFZZ	5305-00-054-6650	MS51957-26	96906	SCREW, MACHINE.....5GI	EA	2
2	7	PAFZZ	5310-00-929-6395	MS35338-136	96906	WASHER, LOCK.....5GI	EA	2
2	8	XDFZZ		HKP1 1-4X1-4	71400	FUSEHOLDER5GI	EA	2
2	9	PAFZZ	9390-00-974-8533	548-9440-002	13499	NONMETALLIC CHANNEL.....5GI	EA	1
2	10	PAFZZ	5310-00-883-5931	410894-38	96214	WASHER LOCK.....5GI	EA	1
2	11	XDFZZ		P313-0064-000	77250	NUT, PLAIN, HEXAGON5GI	EA	1
2	12	XDFZZ		91058	77969	BUMPER, RUBBER.....5GI	EA	4
2	13	XDFZZ	5305-00-207-1385	335-0010-00	08664	SETSCREW5GI	EA	1
2	14	PAFZZ	5935-00-728-3077	548-9450-003	13499	SHELL, ELECTRICAL CO.....5GI	EA	1
2	15	PAFZZ	5935-00-989-5315	545-7705-002	13499	SOCKET, PLUG-IN ELEC.....5GI	EA	1
2	16	PAFZZ	5305-00-770-2579	MS51959-15	96906	SCREW, MACHINE.....5GI	EA	4
2	17	PAFZZ	5310-00-209-0330	310-0054-000	79807	WASHER, FLAT.....5GI	EA	4
2	18	PAFZZ	5995-00-984-5241	4C1391	82389	CABLEASSEMBLY, SPEC.....5GI	EA	1
2	19	XDFZZ		757-4784-000	13499	PLATE5GI	EA	1
2	20	XDFFF		548+9456-005	13499	CHASSIS, ELECTRICAL5GI	EA	1

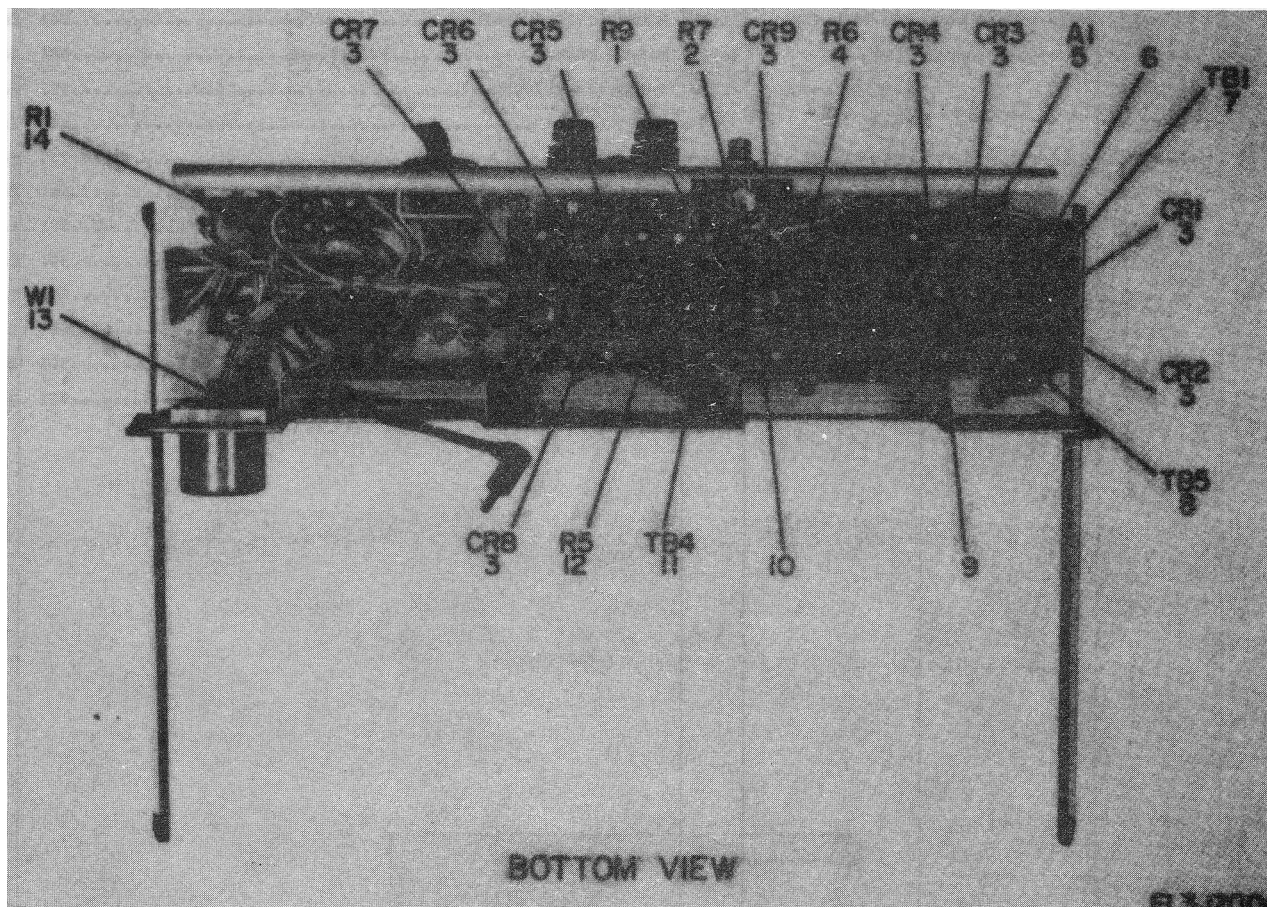
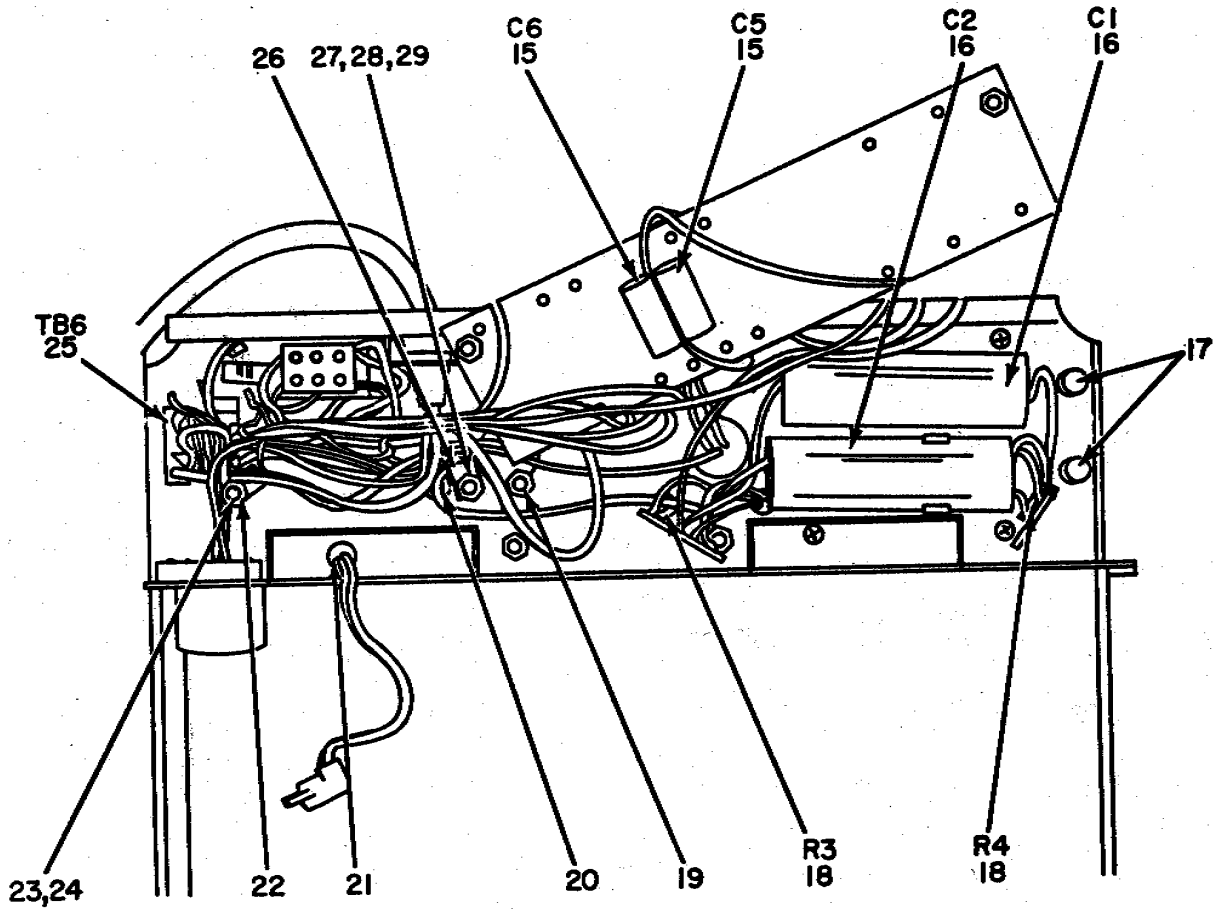


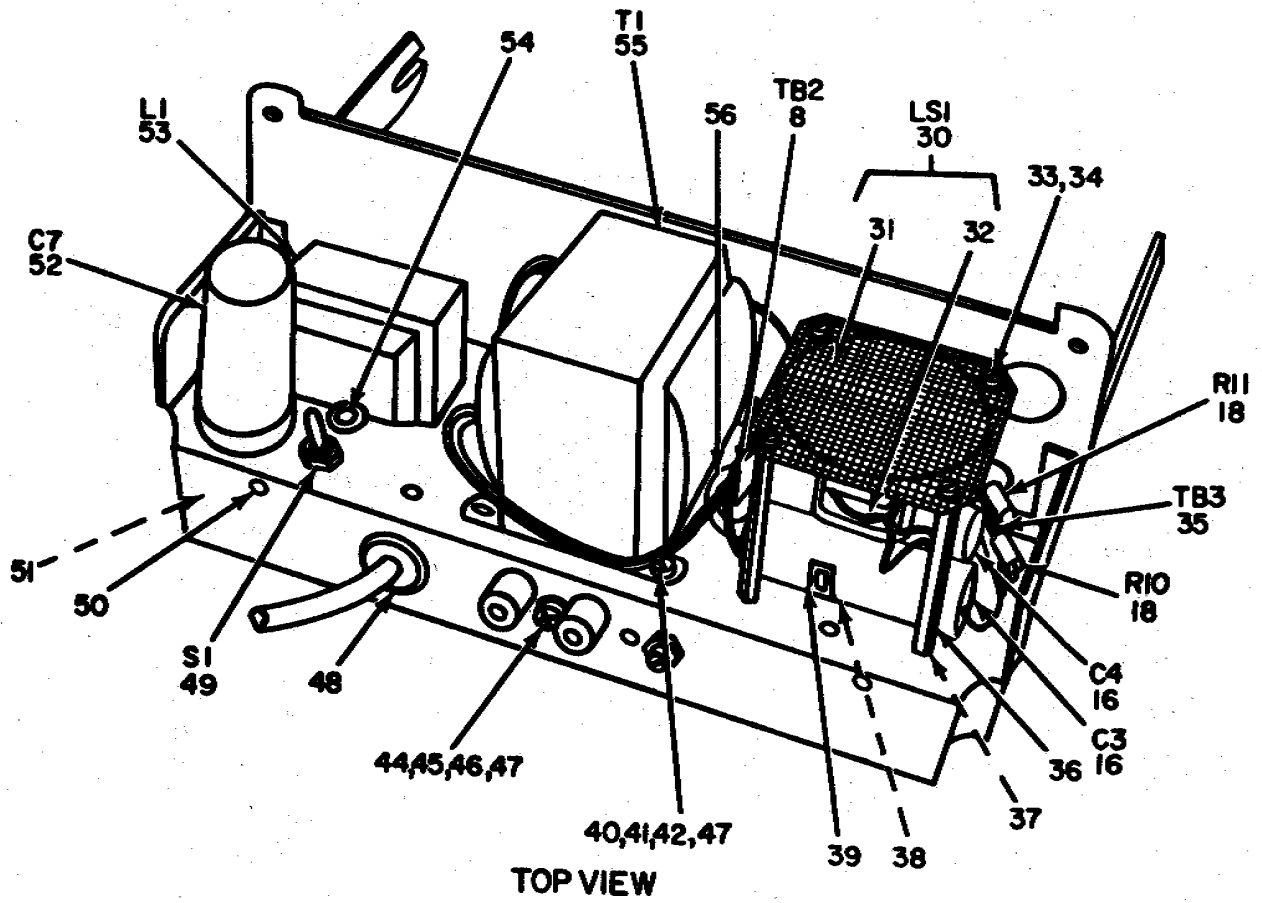
Figure 3. Power Supply PP-3990/FRC-93, Chassis Assembly (Sheet 1 of 3).



CHASSIS VIEW

EL3JZ005

Figure 3. Power Supply PP-3990/FRC-93, Chassis Assembly (Sheet 2 of 3).



EL3JZ006

Figure 3. Power Supply PP-3990/FRC-93, Chassis Assembly (Sheet 3 of 3).

SECTION II

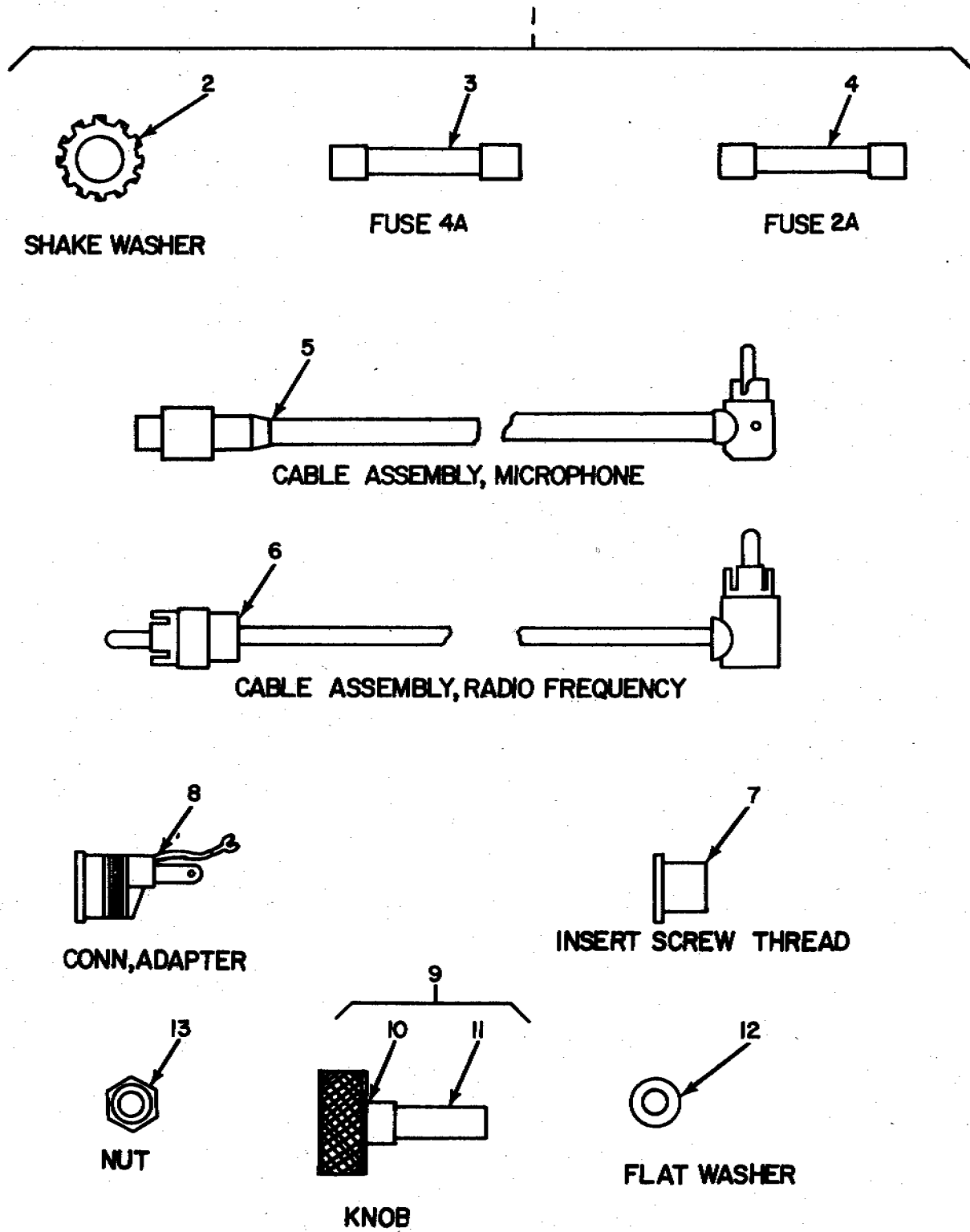
TM 11-5820-554-24P-4

(1) ILLUSTRATION		(2)	(3)	(4)	(5)	(6)	(7)	(8)
(a) FIG NO.	(b) ITEM NO.	SMR CODE	NATIONAL STOCK NUMBER	PART NUMBER	FSCM	DESCRIPTION <i>USABLE ON CODE</i>	U/M	QTY INC IN UNIT
3	1	PAFZZ	5905-00-104-8353	RCR32G472JS	81349	RESISTOR, FIXE5GI	EA	1
3	2	PAFZZ	5905-01-054-5383	RCR32G392KS	81349	RESISTOR, FIXED, COMP.....5GI	EA	1
3	3	PAFZZ	5961-00-465-4405	1N4005	04713	SEMICONDUCTOR DEVIC.....5GI	EA	9
3	4	PAFZZ	5905-00-113-7346	RCR32G470JS	81349	RESISTOR, FIXE5GI	EA	1
3	5	PAFFF	5820-00-980-6500	548-9445-003	13499	CHASSIS ASSEMBLY, PO5GI	EA	1
3	6	XDFZZ		548-9447-003	13499	BOARD, FABRICATED5GI	EA	1
3	7	PAFZZ	5940-00-063-8843	548-9446-003	13499	TERMINAL BOARD.....5GI	EA	1
3	8	XDFZZ		332-14-03-017	71785	TERMINAL BOARD.....5GI	EA	2
3	9	PAFZZ	5940-00-549-2727	1300D	88245	TERMINAL, STUD.....5GI	EA	18
3	10	PAFZZ	5325-00-286-6047	MS35489-1	96906	GROMMET, NONMETALLIC5GI	EA	1
3	11	XDFZZ		332-14-04-037	71785	TERMINAL BOARD.....5GI	EA	1
3	12	PAFZZ	5905-00-951-1591	RW67V200	81349	RESISTOR, FIXED, WIRE.....5GI	EA	1
3	13	XDFFF		548-9448-003	13499	WIRING HARNESS5GI	EA	1
3	14	PAFZZ	5905-00-759-8896	RCR42G104JS	81349	RESISTOR, FIXE5GI	EA	1
3	15	XDFZZ		E26A817	04222	CAPACITOR, FIXED.....5GI	EA	2
3	16	PAFZZ	5910-00-941-8234	D37320	56289	CAPACITOR.....5GI	EA	4
3	17	PAFZZ	5970-00-984-9061	548-9442-002	13499	INSULATOR, STANDOFF.....5GI	EA	2
3	18	PAFZZ	5905-00-252-1047	RCR32G274JS	81349	RESISOR, FIXED.....5GI	EA	4
3	19	PAFZZ	5340-00-945-1027	540-9464-003	13499	POST, ELECTRICA--NEC.....5GI	EA	1
3	20	PAFZZ	5305-00-054-6668	MS51957-43	96906	SCREW, MACHINE.....5GI	EA	1
3	21	PAFZZ	5325-00-174-5317	MS35489-4	96906	GROMMET, NONMETALLIC5GI	EA	1
3	22	XDFZZ	5940-00-685-8974	2104-08-02-2520N	78189	TERMINAL, LUG5GI	EA	1
3	23	PAFZZ	5305-00-495-5558	P343-0309-000	77250	SCREW, MACHINE.....5GI	EA	1
3	24	XDFZZ		P313-0054-000	77250	NUT, PLAIN, HEXAGON5GI	EA	1
3	25	PAFZZ	5940-00-229-9644	1520A	71785	TERMINAL BOARD.....5GI	EA	1
3	26	XDFZZ	5340-00-975-1440	HP6N	09922	CLAMP, LOOP.....5GI	EA	1
3	27	XDFZZ	5310-00-531-9514	310-6360-000	79807	WASHER, FLAT.....5GI	EA	1
3	28	PAFZZ	5310-00-934-9761	MS35649-264	96906	NUT, PLAIN, HEXAGON5GI	EA	1
3	29	PAFZZ	5305-00-054-6653	MS51957-29	96906	SCREW, MACHINE.....5GI	EA	1
3	30	PAFFF	5965-00-964-1756	548-9449-003	13499	LOUDSPEAKER, PERMANE.....5GI	EA	1
3	31	XDFZZ		548-9441-002	13499	SCREEN, PLAYER5GI	EA	1
3	32	XDFZZ		73-5947	74199	LOUDSPEAKER.....5GI	EA	1
3	33	PAFZZ	5310-00-929-6395	MS35338-136	96906	WASHER, LOCK.....5GI	EA	4
3	34	PAFZZ	5305-00-054-6651	MS51957-27	96906	SCREW, MACHINE.....5GI	EA	4
3	35	XDFZZ		332-1403-165	71785	TERMINAL BOARD.....5GI	EA	1
3	36	XDFZZ		779-2951-001	13499	POST5GI	EA	4
3	37	XDFZZ		310-0447-000	79807	WASHER, FLAT.....5GI	EA	4
3	38	PAFZZ	5320-00-286-4258	R4012X5-32PLAIN	12014	RIVET, TUBULAR5GI	EA	2
3	39	PAFZZ	5910-00-878-5258	139-0090-000	13499	RETAINER, CAPACITOR.....5GI	EA	4
3	40	XDFZZ		310-0057-000	79807	WASHER, FLAT.....5GI	EA	1

SECTION II

TM 11-5820-554-24P-4

(1) ILLUSTRATION		(2)	(3)	(4)	(5)	(6)	(7)	(8)
(a) FIG NO.	(b) ITEM NO.	SMR CODE	NATIONAL STOCK NUMBER	PART NUMBER	FSCM	DESCRIPTION <i>USABLE ON CODE</i>	U/M	QTY INC IN UNIT
3	41	PAFZZ	5310-00-042-9067	310-0283-000	70318	WASHER, LOCK5GI	EA	1
3	42	PAFZZ	5310-00-934-9759	MS35649-284	96906	NUT, PLAIN, HEXAGON5GI	EA	1
3	44	PAFZZ	5310-00-576-0546	MS35338-99	96906	WASHER, LOCK5GI	EA	1
3	45	PAFZZ	5310-00-655-9677	CL832-2C	46384	NUT, PLAIN, CLINCH5GI	EA	1
3	46	PAFZZ	5310-00-245-4718	310-0058-000	79807	WAHER, FLAT5GI	EA	1
3	47	PAFZZ	5305-00-252-9666	P343-0311-000	77250	SCREW, MACHINE.....5GI	EA	2
3	48	XDFZZ	5975-00-246-4906	SR6P4	28520	BUSHING, STRAIN RELI.....5GI	EA	1
3	49	PAFZZ	5930-00-655-1582	MS35059-23	96906	SWITCH, TOGGLE5GI	EA	1
3	50	PAFZZ	5310-00-680-4919	CL632-2C	46384	NUT, PLAIN, CLINCH5GI	EA	1
3	51	XDFZZ		548-9455-005	13499	CHASSIS, ELECTRICAL5GI	EA	1
3	52	PAFZZ	5910-00-174-9207	UP4445	14655	CAPACITOR, FIXED, ELE5GI	EA	1
3	53	PAFZZ	5950-00-088-6525	40410	73386	REACTOR.....5GI	EA	1
3	54	XDFZZ		BS82524G	14370	GROMMET, RUBBER.....5GI	EA	1
3	55	PAFZZ	5950-00-080-5306	40412	73386	TRANSFORMER, POWER5GI	EA	1
3	56	PAFZZ	5325-00-291-9366	MS35489-11	96906	GROMMET, NONMETALLIC5GI	EA	1



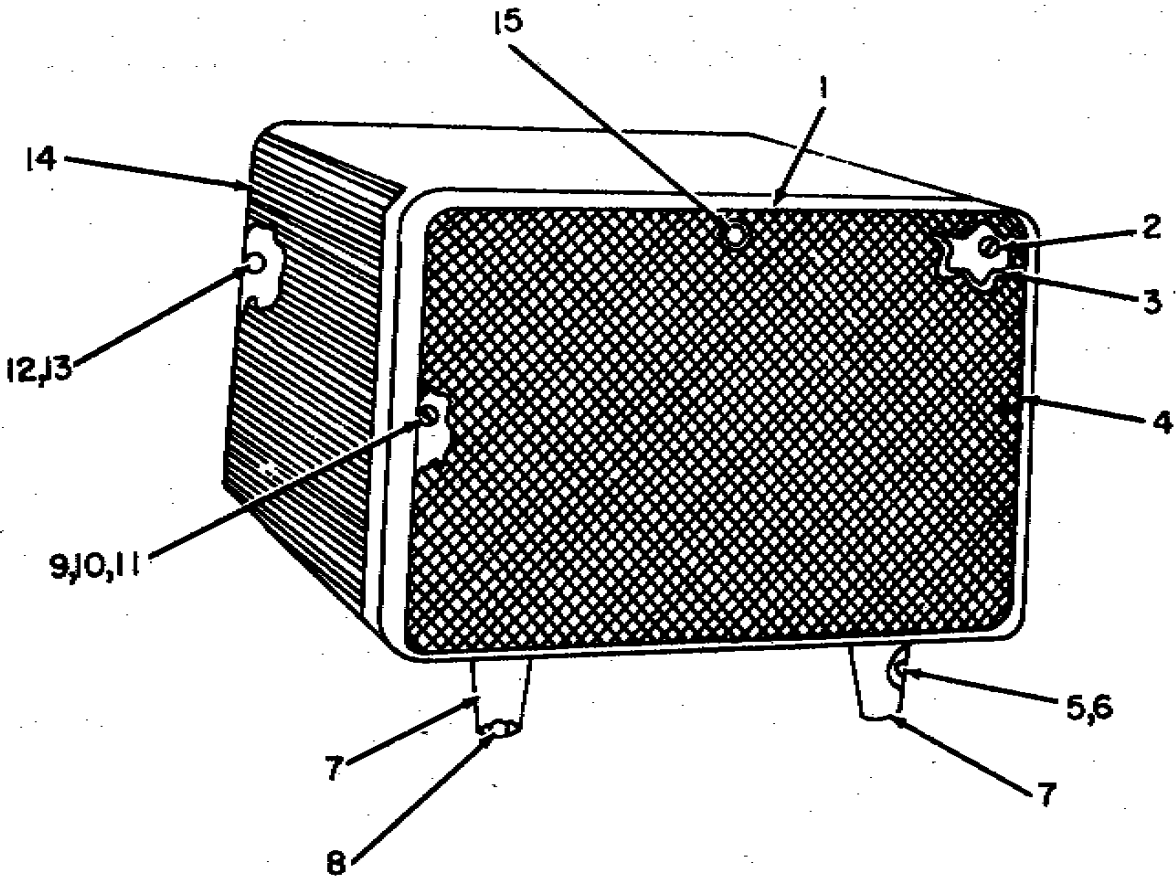
EL3JZ007

Figure 4. Power Supply PP-3990/FRC-93, Installation Kit.

SECTION II

TM 11-5820-554-24P-4

(1) ILLUSTRATION		(2)	(3)	(4)	(5)	(6)	(7)	(8)
(a) FIG NO.	(b) ITEM NO.	SMR CODE	NATIONAL STOCK NUMBER	PART NUMBER	FSCM	DESCRIPTION <i>USABLE ON CODE</i>	U/M	QTY INC IN UNIT
4	1	XDOFF		548-9457-000	13499	KIT, INSTALLATION5GI	EA	1
4	2	PAFZZ	5310-00-883-5931	410894-38	96214	SHAKE WASHER5GI	EA	1
4	3	PAOZZ	5920-00-474-6125	F02A250V2AS	81349	FUSE, CARTRIDGE5GI	EA	1
4	4	PAOZZ	5920-00-281-0210	F02A250V4AS	81349	FUSE, CARTRIDGE5GI	EA	1
4	5	XDFZZ		25AH30	82389	CABLE ASSEMBL.....5GI	EA	1
4	6	PAFZZ	5995-00-951-0026	4C1520A	82389	CABLE ASSEMBL.....5GI	EA	1
4	7	PAFZZ	5340-00-975-5763	545-7688-002	13499	INSERT, SCREW THREAD.....5GI	EA	1
4	8	XDFZZ		351	08556	CONNECTOR, ADAPTER.....5GI	EA	1
4	9	PAOOO	5355-00-971-9302	545-7702-002	13499	KNOB ASSEMBLY5GI	EA	1
4	10	XDOZZ		542-7794-002	13499	WASHER, KNOB5GI	EA	1
4	11	XDOZZ		553-5697-002	13499	KNOB, MOUNTING5GI	EA	1
4	12	PAFZZ	5310-00-245-4719	310-0052-000	79807	WASHER, FLAT.....5GI	EA	1
4	13	PAFZZ	5310-00-275-5147	P334-4120-00	77250	NUT, PLAIN, HEXAGON5GI	EA	1



EL3JZ008

Figure 5. Power Supply PP-4151/FRC-93.

SECTION II

TM 11-5820-554-24P-4

(1) ILLUSTRATION		(2)	(3)	(4)	(5)	(6)	(7)	(8)
(a) FIG NO.	(b) ITEM NO.	SMR CODE	NATIONAL STOCK NUMBER	PART NUMBER	FSCM	DESCRIPTION <i>USABLE ON CODE</i>	U/M	QTY INC IN UNIT
						GROUP 00 POWER SUPPLY PP-4151/FRC-93		
5	1	XDFZZ		280-3423-00	13499	INSIGNIA.....5GJ	EA	1
5	2	XDFZZ		330-2420-000	13499	SCREW, MACHINE.....5GJ	EA	4
5	3	XDFZZ		544-2860-003	13499	PAD, POWER.....5GJ	EA	1
5	4	XDFZZ		544-2861-003	13499	PANEL, FRONT5GJ	EA	1
5	5	XDFZZ	5305-00-054-6651	MS51957-27	96906	SCREW, MACHINE.....5GJ	EA	2
5	6	XDFZZ	5305-00-054-6655	MS51957-31	96906	SCREW, MACHINE.....5GJ	EA	2
5	7	PAFZZ	5820-00-974-3142	543-8101-002	13499	FOOT, CABINET.....5GJ	EA	2
5	8	PAFZZ	5340-00-264-7182	747R	75543	BUMPER, RUBBER.....5GJ	EA	4
5	9	XDFZZ	5310-00-934-9761	MS35649-64	96906	NUT, PLAIN, HEX5GJ	EA	2
5	10	XDFZZ		543-8116-000	13499	SCREW, MACHINE.....5GJ	EA	2
5	11	XDFZZ	5310-00-275-1347	310-0046-00	79807	WASHER, FLAT.....5GJ	EA	2
5	12	XDFZZ	5310-00-929-6395	MS35338-136	96906	WASHER, LOCK.....5GJ	EA	2
5	13	XDFZZ	5305-00-054-6660	MS51957-36	96906	SCREW, MACHINE.....5GJ	EA	2
5	14	XDFZZ		544-2868-005	13499	CABINET, POWER SUPPL.....5GJ	EA	1
5	15	XDFZZ	5310-00-976-0274	C13388SS010	78553	PUSH ON NUT5GJ	EA	1

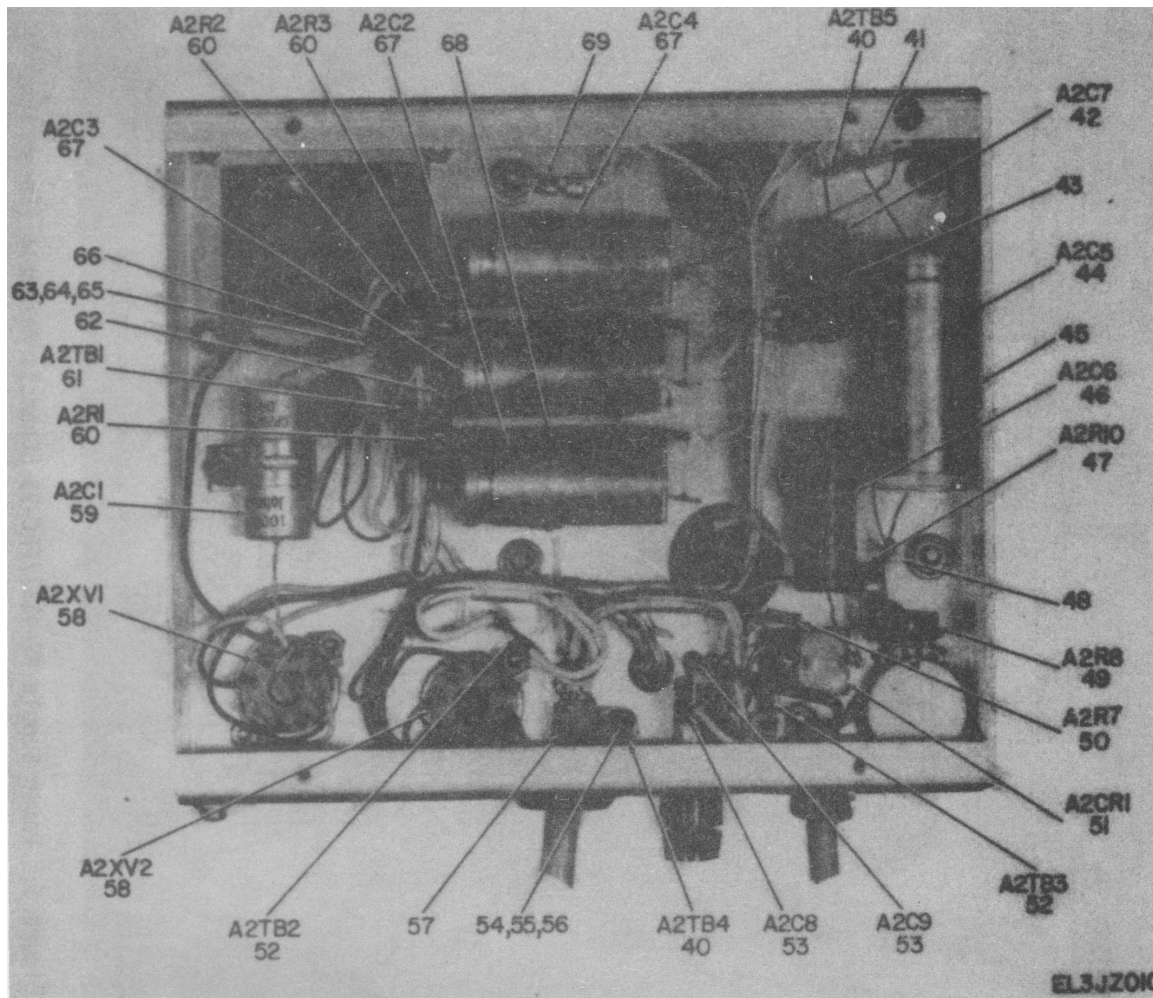


Figure 6. Power Supply PP-4151/FRC-93, Chassis Assembly (Sheet 1 of 2).

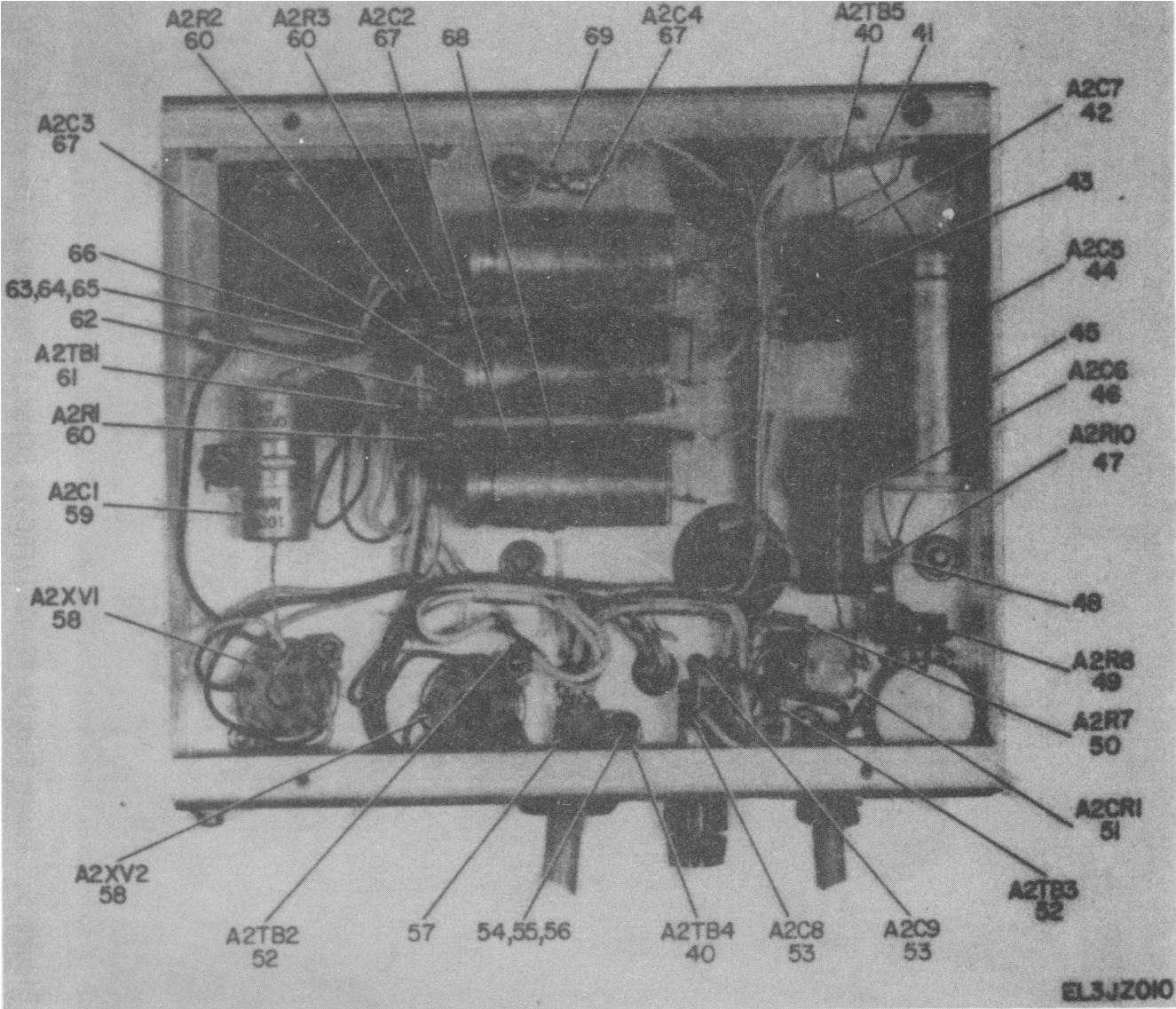


Figure 6. Power Supply PP-4151/FRC-93, Chassis Assembly (Sheet 2 of 2).

SECTION II

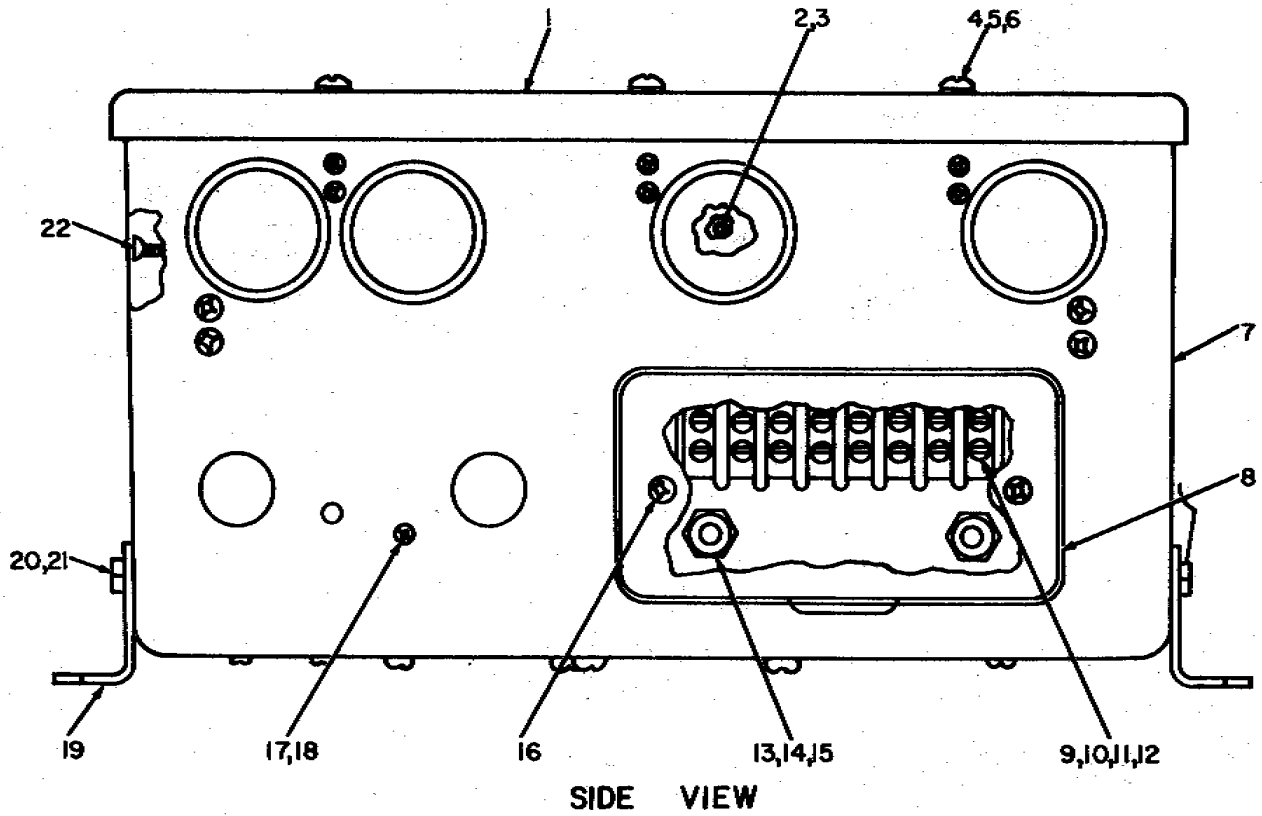
TM 11-5820-554-24P-4

(1) ILLUSTRATION		(2)	(3)	(4)	(5)	(6)	(7)	(8)
(a) FIG NO.	(b) ITEM NO.	SMR CODE	NATIONAL STOCK NUMBER	PART NUMBER	FSCM	DESCRIPTION USABLE ON CODE	U/M	QTY INC IN UNIT
6	1	XDFFF		544-2856-000	13499	CHASSIS, ASSEMBLY5GJ	EA	1
6	2	PAFZZ	5950-00-083-1622	E13662	32712	REACTOR.....5GJ	EA	2
6	3	XDFZZ	5310-00-934-9759	MS35649-284	96906	NUT, PLAIN, HEX.....5GJ	EA	4
6	4	XDFZZ	5310-00-933-8119	MS35338-137	96906	WASHER, LOCK.....5GJ	EA	4
6	5	XDFZZ		A15390	97965	REACTOR.....5GJ	EA	1
6	6	XDFZZ	5305-00-054-6652	MS51957-28	96906	SCREW, MACHINE.....5GJ	EA	2
6	7	XDFZZ	5310-00-616-3555	MS35333-71	96906	WASHER, LOCK.....5GJ	EA	2
6	8	PAOZZ	5960-00-681-9741	5R4GYA	33173	ELECTRON TUBE.....5GJ	EA	1
6	9	XDFZZ	5995-00-901-1105	544-2855-000	13499	CABLE ASSEMBLY, SPEC.....5GJ	EA	1
6	10	XDFZZ	5935-00-259-1008	3-24	02660	SHIELD, ELECTRICAL C.....5GJ	EA	1
6	11	XDFZZ	5935-00-901-4356	78S11M1005	02660	SOCKET, PLUG-IN ELEC.....5GJ	EA	1
6	12	XDFZZ	6145-00-900-9413	S10-862	04569	CABLE, SPECIAL PURPO.....5GJ	EA	V
6	13	PAOZZ	5960-00-508-1047	5U4GB	54590	ELECTRON TUBE.....5GJ	EA	1
6	14	XDFZZ		P343-0311-00	77250	SCREW, MACHINE.....5GJ	EA	1
6	15	XDFZZ		310-0058-00	79807	WASHER, FLAT.....5GJ	EA	1
6	16	XDFZZ		310-0079-00	79807	WASHER, LOCK.....5GJ	EA	5
6	17	XDFZZ		280-2970-000	13499	LABEL.....5GJ	EA	1
6	18	PAFZZ	5325-00-795-0719	MS35489-43	96906	GROMMET, RUBBER.....5GJ	EA	1
6	19	XDFZZ		544-2858-002	13499	STUD, LONG.....5GJ	EA	2
6	20	PAFZZ	5905-00-100-8029	0219	44655	RESISTOR, FXD5GJ	EA	2
6	21	XDFZZ		HKP11-4X1-4	71400	FUSEHOLDER5GJ	EA	1
6	22	XDOZZ		MDLI	71400	FUSE, SELECT.....5GJ	EA	1
6	22	PAOZZ	5920-00-284-7466	MDX4	71400	FUSE, SELECT.....5GJ	EA	1
6	23	XDFZZ		544-2857-002	13499	PAD, INSULATING.....5GJ	EA	1
6	24	PAFZZ	5975-00-273-0788	SR6P1	28520	BUSHING, STRAIN RELI.....5GJ	EA	1
6	25	XDFZZ		2K40F24PORM5PCT	44655	RESISTOR, FXD, WW.....5GJ	EA	1
6	26	XDFZZ	5940-00-501-8634	4021	77147	TERMINAL, LUG5GJ	EA	1
6	27	XDFZZ		P312-0062-00	77250	STUD, CONT THREAD5GJ	EA	1
6	28	XDFZZ		544-2862-003	13499	SHIELD, HIGH, VOLTAGE.....5GJ	EA	1
6	29	XDFZZ		LQ8338	71450	RESISTOR, VAR.....5GJ	EA	1
6	30	XDFZZ		KH3491	70903	CABLE ASSEMBLY, SP.....5GJ	EA	1
6	31	XDFZZ		122-02CADPL	78189	WASHER, LOCK.....5GJ	EA	1
6	32	XDFZZ	5310-00-275-5147	P334-4120-00	77250	NUT, PLAIN, HEXAGON5GJ	EA	1
6	33	XDFZZ		544-2864-003	13499	CHASSIS, PRESSED.....5GJ	EA	1
6	34	PAOZZ	5935-00-892-9148	350	08556	ADAPTER, CONNECTOR SELECT.....5GJ	EA	1
6	34	XDOZZ		5829	74545	ADAPTER, CONNECTOR SELECT.....5GJ	EA	1
6	35	XDFZZ	5305-00-059-3659	MS51958-63	96906	SCREW, MACHINE.....5GJ	EA	4
6	36	XDFZZ	5310-00-270-8810	MS35650-104	96906	WASHER.....5GJ	EA	4
6	37	XDFZZ	5310-00-685-1450	310-0049-00	79807	WASHER, FLAT.....5GJ	EA	8
6	38	XDFZZ		MS35338-138	96906	WASHER, LOCK.....5GJ	EA	4

SECTION II

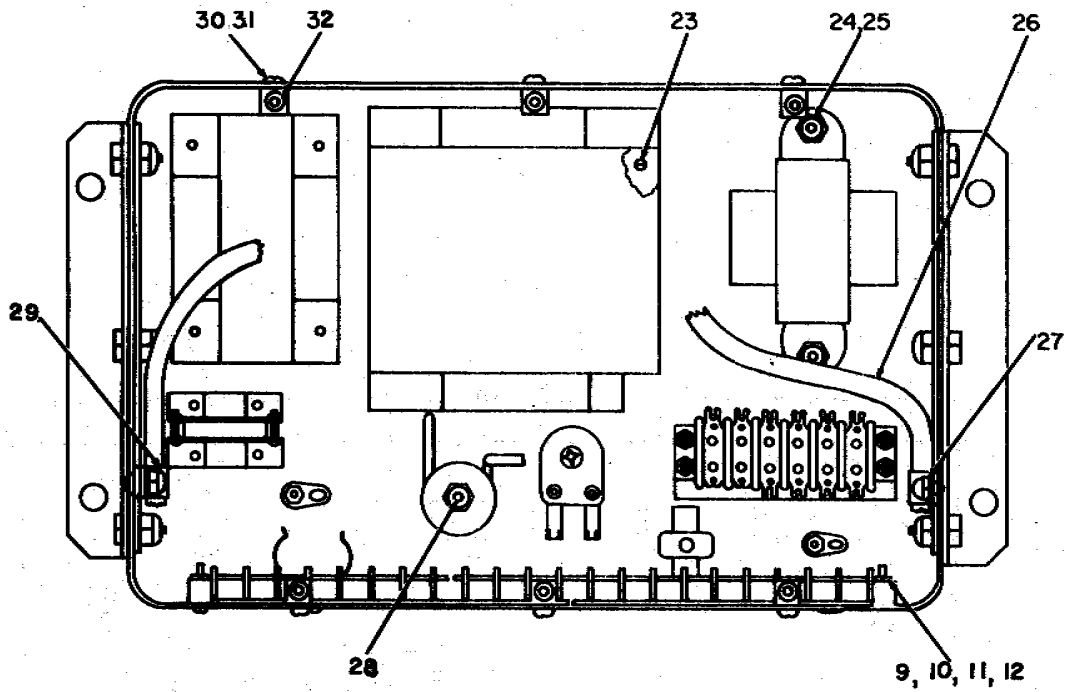
TM 11-5820-554-24P-4

(1) ILLUSTRATION		(2)	(3)	(4)	(5)	(6)	(7)	(8)
(a) FIG NO.	(b) ITEM NO.	SMR CODE	NATIONAL STOCK NUMBER	PART NUMBER	FSCM	DESCRIPTION USABLE ON CODE	U/M	QTY INC IN UNIT
6	39	PAFZZ	5950-00-062-1122	38578	73386	TRANSFORMER, POWER5GJ	EA	1
6	40	XDFZZ	5940-00-155-7072	1532A	71785	TERMINAL, BOARD.....5GJ	EA	2
6	41	XDFZZ		PK75XB6-4-1	45722	SCREW, TAP, THREAD.....5GJ	EA	1
6	42	XDFZZ		E26A817	04222	CAPACITOR, ELCTLT.....5GJ	EA	1
6	43	XDFZZ	5910-00-121-5090	E50003-041	80033	RETAINER, CAPACITOR.....5GJ	EA	1
6	44	PAFZZ	5910-00-901-4381	D28167	56289	CAPACITOR, FIXED, ELE.....5GJ	EA	1
6	45	XDFZZ		E50008-041	80033	RETAINER, CAP.....5GJ	EA	1
6	46	PAFZZ	5910-00-668-3141	TC52	37942	CAPACITOR, FIXED, ELE.....5GJ	EA	1
6	47	PAFZZ	5905-00-279-2303	RC42GF562K	81349	RESISTOR, FIXED, COMP.....5GJ	EA	1
6	48	XDFZZ		4035-12HOTTINNED	77147	TERMINAL, LUG5GJ	EA	1
6	49	PAFZZ	5905-00-478-4327	RC42GF332K	81349	RESISTOR, FIXED, COMP.....5GJ	EA	1
6	50	PAFZZ	5905-00-186-3008	RC20GF101K	81349	RESISTOR, FIXED, COMP.....5GJ	EA	1
6	51	PAFZZ	6130-00-500-0412	50	84970	RECTIFIER, METALLIC5GJ	EA	1
6	52	XDFZZ	5940-00-087-6275	332-14-02-001	71785	TERMINAL BOARD.....5GJ	EA	2
6	53	XDFZZ		2DOH63N103M	71590	CAPACITOR, FXD, CER.....5GJ	EA	2
6	54	XDFZZ		MS35649-64	96906	NUT PLAIN HEX5GJ	EA	1
6	55	XDFZZ	5310-00-531-9514	310-6360-00	79807	WASHER, FLAT.....5GJ	EA	1
6	56	XDFZZ	5970-00-237-5672	1210	70494	INSULATOR, BUSHING.....5GJ	EA	1
6	57	PAFZZ	5340-00-975-1440	HP6N	09922	CLAMP LOOP.....5GJ	EA	1
6	58	XDFZZ		168-013-1000	02660	SOCKET TUBE5GJ	EA	2
6	59	PAFZZ	5910-00-280-9164	CP29A1EG503K	81349	CAPACITOR, FIXED, [A[.....5GJ	EA	1
6	60	PAFZZ	5905-00-279-1921	RC42GF274J	81349	RESISTOR, FIXED, CMPSN5GJ	EA	3
6	61	XDFZZ		332-1403-165	71785	TERMINAL BOARD.....5GJ	EA	1
6	62	PAFZZ	5325-00-185-0012	MS35489-35	96906	GROMMET, NONMETALLIC5GJ	EA	1
6	63	XDFZZ	5305-00-054-5648	MS51957-14	96906	SCREW, MACHINE.....5GJ	EA	1
6	64	XDFZZ	5310-00-934-9748	MS35649-244	96906	NUT, PLAIN, HEX.....5GJ	EA	1
6	65	XDFZZ	5310-00-933-8118	MS35338-135	96906	WASHER, LOCK.....5GJ	EA	1
6	66	XDFZZ		2B1DB12	92825	TERMINAL, STUD5GJ	EA	1
6	67	XDFZZ		D28166	56289	CAPACITOR, ELCTLT.....5GJ	EA	3
6	68	XDFZZ		E50007-041	80033	RETAINER, CAPACITOR.....5GJ	EA	3
6	69	XDFZZ	5940-00-194-4203	2041-10-032HOTT NNED	77147	TERMINAL, LUG5GJ	EA	1

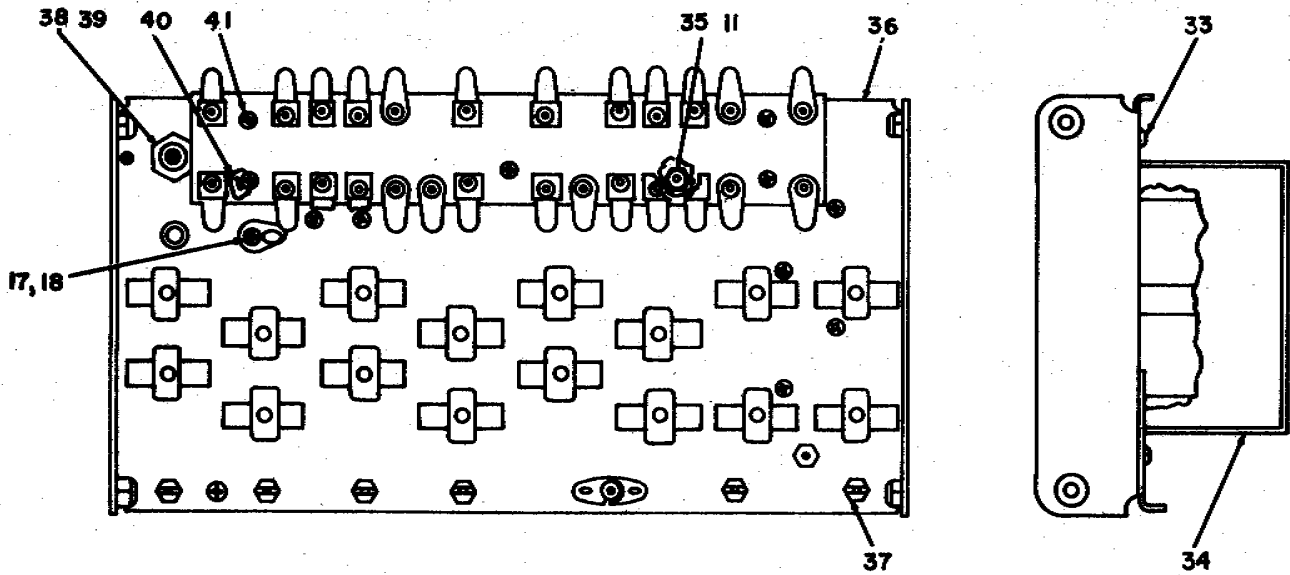


EL3JZ011

Figure 7. Power Supply PP-4765/GRC-159(V) (Sheet 1 of 2).



TOP VIEW



BOTTOM VIEW

EL3JZ012

Figure 7. Power Supply PP-4765/GRC-159(V) (Sheet 2 of 2).

SECTION II

TM 11-5820-554-24P-4

(1) ILLUSTRATION		(2)	(3)	(4)	(5)	(6)	(7)	(8)
(a) FIG NO.	(b) ITEM NO.	SMR CODE	NATIONAL STOCK NUMBER	PART NUMBER	FSCM	DESCRIPTION <i>USABLE ON CODE</i>	U/M	QTY INC IN UNIT
						GROUP 00 POWER SUPPLY PP-4765/GRC-159(V)		
7	1	XDFZZ		542-7580-004	13499	COVER.....5GK	EA	1
7	2	PAFZZ	5310-00-934-9766	MS35650-305	96906	NUT, PLAIN, HEXAGON.....5GK	EA	4
7	3	PAFZZ	5310-00-261-8278	310-0080-00	13499	WASHER, LOCK.....5GK	EA	4
7	4	XDFZZ		310-0072-00	13499	WASHER, LOCK.....5GK	EA	6
7	5	PAFZZ	5365-00-695-2558	340-0642-00	13499	RING, RETAINING.....5GK	EA	6
7	6	PAFZZ	5305-00-054-6671	MS51957-46	96906	SCREW, MACHINE.....5GK	EA	6
7	7	XDFFF		543-2811-003	13499	CASE POWER SUPPLY.....5GK	EA	1
7	8	XDFZZ		542-5735-002	13499	COVER.....5GK	EA	1
7	9	XDFZZ		343-0173-00	13499	SCREW, MACHINE.....5GK	EA	16
7	10	PAFZZ	5310-00-283-0710	302-0026-00	13499	WASHER, FLAT.....5GK	EA	16
7	11	XDFZZ		310-0046-00	13499	WASHER, FLAT.....5GK	EA	17
7	12	XDFZZ		313-0043-00	13499	NUT, PLAIN.....5GK	EA	16
7	13	XDFZZ		302-0051-00	13499	WASHER, FIBER.....5GK	EA	2
7	14	PAFZZ	5310-00-042-6758	310-0288-00	13499	WASHER, LOCK.....5GK	EA	4
7	15	XDFZZ		313-0148-00	13499	NUT, PLAIN.....5GK	EA	4
7	16	PAFZZ	5305-00-054-6660	MS51957-36	96906	SCREW, MACHINE.....5GK	EA	1
7	17	PAFZZ	5305-00-054-5648	MS51957-14	96906	SCREW, MACHINE.....5GK	EA	1
7	18	XDFZZ		333-0347-00	13499	NUT, SELFLOCKING.....5GK	EA	1
7	19	XDFZZ		542-7573-002	13499	BRACKET, MTG.....5GK	EA	2
7	20	XDFZZ		325-0051-00	13499	SCREW.....5GK	EA	6
7	21	XDFZZ		500-2112-002	13499	SHIM.....5GK	EA	1
7	22	XDFZZ		342-0062-00	13499	SCREW.....5GK	EA	4
7	23	XDFZZ		343-0189-00	13499	SCREW.....5GK	EA	4
7	24	XDFZZ		333-0381-00	13499	NUT SELFLOCKING.....5GK	EA	2
7	25	PAFZZ	5305-00-054-6669	MS51957-44	96906	SCREW, MACHINE.....5GK	EA	2
7	26	XDFZZ		542-7590-00	13499	CABLE POWER SUPPLY.....5GK	EA	1
7	27	PAFZZ	5310-00-857-3547	333-0368-00	13499	NUT, SELF-LOCKING, HE.....5GK	EA	2
7	28	XDFZZ		343-0200-00	13499	SCREW.....5GK	EA	1
7	29	XDFZZ		150-1542-00	13499	CLAMP LOOP.....5GK	EA	1
7	30	PAFZZ	5310-00-933-8118	310-0279-00	13499	WASHER, LOCK.....5GK	EA	12
7	31	PAFZZ	5305-00-054-5650	MS51957-16	96906	SCREW, MACHINE.....5GK	EA	12
7	32	XDFZZ		542-5732-0002	13499	FASTENER COVER.....5GK	EA	6
7	33	PAFZZ	5305-00-054-5646	MS51957-12	96906	SCREW, MACHINE.....5GK	EA	4
7	34	XDFZZ		542-7579-003	13499	SHIELD, RELAY.....5GK	EA	1
7	35	PAFZZ	5305-00-054-6652	MS51957-28	96906	SCREW.....5GK	EA	1
7	36	XDFFF		542-7577-003	13499	CHASSIS ASSEMBLY.....5GK	EA	1
7	37	PAFZZ	5305-00-054-5647	343-0133-00	13499	SCREW.....5GK	EA	1
7	38	PAFZZ	5310-00-883-5931	410894-38	13499	WASHER, LOCK.....5GK	EA	1
7	39	XDFZZ		334-4120-00	13499	NUT.....5GK	EA	1

SECTION II

TM 11-5820-554-24P-4

(1) ILLUSTRATION		(2)	(3)	(4)	(5)	(6)	(7)	(8)
(a) FIG NO.	(b) ITEM NO.	SMR CODE	NATIONAL STOCK NUMBER	PART NUMBER	FSCM	DESCRIPTION <i>USABLE ON CODE</i>	U/M	QTY INC IN UNIT
7	40	XDFZZ		541-6095-002	13499	SPACER, SLEEVE.....5GK	EA	5
7	41	PAFZZ	5305-00-054-5653	343-0139-00	13499	SCREW, MACHINE.....5GK	EA	1

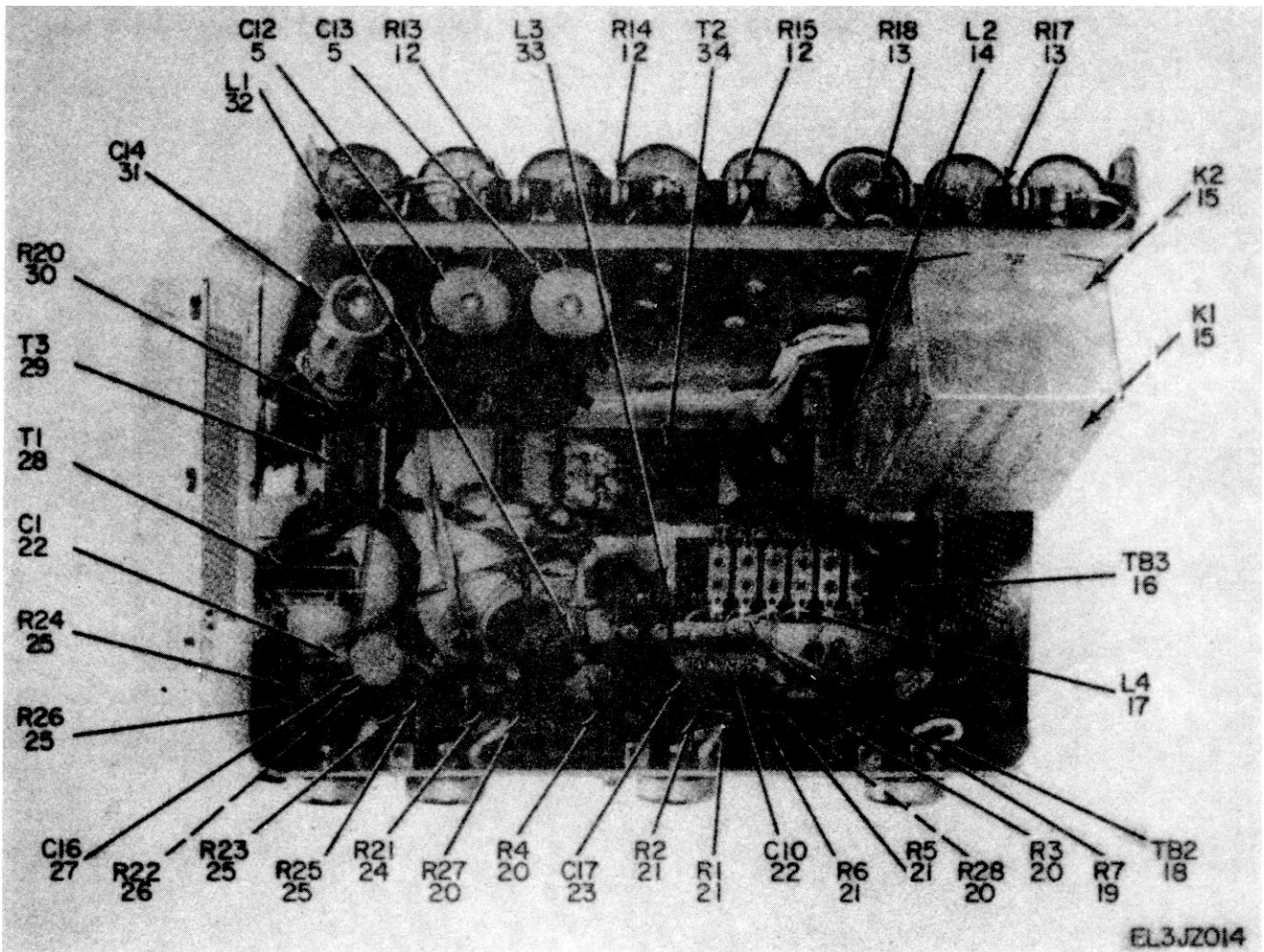


Figure 8. Power Supply PP-4765/GRC-159(V), Cover Removed (Sheet 2 of 2).

SECTION II

TM 11-5820-554-24P-2

(1) ILLUSTRATION		(2)	(3)	(4)	(5)	(6)	(7)	(8)
(a) FIG NO.	(b) ITEM NO.	SMR CODE	NATIONAL STOCK NUMBER	PART NUMBER	FSCM	DESCRIPTION USABLE ON CODE	U/M	QTY INC IN UNIT
8	1	XDFFF		542-7572-002	13499	TERMINAL BOARD5GK	EA	1
8	2	PAFZZ	5961-00-811-4842	IN1084	51589	SEMICONDUCTOR DEVIC.....5GK	EA	9
8	3	PAFZZ	5905-00-290-1997	RC32GF274K	81349	RESISTOR, FIXED, COMP.....5GK	EA	1
8	4	PAFZZ	5905-00-279-3416	RC42GF330J	81349	RESISTOR, FIXED, COMP.....5GK	EA	1
8	5	PAFZZ	5910-00-086-2089	183-1591-00	13499	CAPACITOR, FIXED, ELE.....5GK	EA	10
8	6	PAFZZ	5961-00-679-5290	727620	16753	TRANSISTOR5GK	EA	4
8	7	PAFZZ	5940-00-171-0246	367-0016-00	13399	TERMINAL BOARD5GK	EA	1
8	8	XDFZZ		0047109	95265	COIL, RF5GK	EA	1
8	9	XDFZZ		M11F19207-16	51349	FUSEHOLDER5GK	EA	2
8	10	XDOZZ		1330	71400	FUSE CARTRIDGE5GK	EA	2
8	11	PAFZZ	5905-00-857-7865	380-0614-00	13499	RESISTOR, VARIABLE, N.....5GK	EA	1
8	12	PAFZZ	5905-00-279-1714	RC32GF224K	81349	RESISTOR, FIXED, COMP.....5GK	EA	12
8	13	PAFZZ	5905-00-299-1997	RC32GF274K	31339	RESISTOR, FIXED, COMP.....5GK	EA	2
8	14	PAFZZ	5950-00-845-1255	668-0270-00	13499	REACTOR5GK	EA	1
8	15	XDFZZ		970-1875-00	13399	RELAY, ELECTROMAGNET.....5GK	EA	2
8	16	XDFZZ		367-0819-00	13499	TERMINAL BOARD5GK	EA	1
8	17	XDFZZ	5950-01-004-7256	10404-36	06560	COIL, RADIO FREQUENC5GK	EA	1
8	18	XDFFF		367-0829-00	13499	TERMINAL BOARD5GK	EA	1
8	19	PAFZZ	5905-00-877-7094	747-5103-00	13499	RESISTOR, FIXED, WIRE.....5GK	EA	1
8	20	PAFZZ	5905-00-113-7346	RCR32G470JS	13499	RESISTOR, FIXED, COMP.....5GK	EA	4
8	21	PAFZZ	5905-00-145-9617	RCR42G22JS	81349	RESISTOR, FIXED, COMP.....5GK	EA	4
8	22	PAFZZ	5910-00-060-6318	183-1656-00	13499	CAPACITOR, FIXED, ELE.....5GK	EA	2
8	23	PAFZZ	5910-00-819-2577	160P10494	56289	CAPACITOR, FIXED, PPR.....5GK	EA	1
8	24	PAFZZ	5905-00-244-8258	RCR32G332JS	81349	RESISTOR, FIXED, COMP.....5GK	EA	1
8	25	PAFZZ	5905-00-279-1692	RC32GF100J	81349	RESISTOR5GK	EA	4
8	26	XDFZZ		745-3373-00	13499	RESISTOR, FIXED, CMPSN5GK	EA	1
8	27	XDFZZ		CD20XD-203W	81112	CAPACITOR, FXD, CER5GK	EA	1
8	28	XDFZZ		BC-2262	97315	TRANSFORMER5GK	EA	1
8	29	PAFZZ	5950-00-044-5064	BC-2260	97315	SATURABLE REACTOR5GK	EA	1
8	30	PAFZZ	5905-00-244-7911	RCR32G682JS	81349	RESISTOR, FIXED, COMP.....5GK	EA	1
8	31	PAFZZ	5910-00-776-9064	TC48	37942	CAPACITOR, FIXED, ELE.....5GK	EA	1
8	32	PAFZZ	5950-00-228-8640	10X610	04377	COIL, RADIO FREQUENC5GK	EA	1
8	33	XDFZZ		240-0021-00	13499	COIL, RADIO FREQUENC5GK	EA	1
8	34	PAFZZ	5950-00-044-5069	664-0284-00	13499	TRANSFORMER, POWER5GK	EA	1

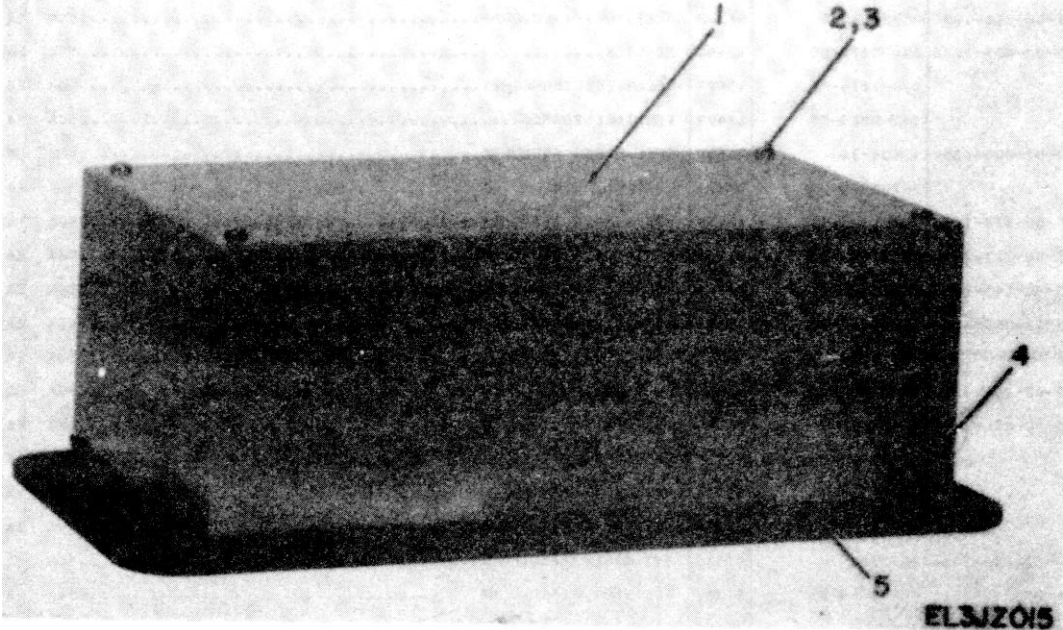


Figure 9. Power Supply MP-1.

SECTION II

TM 11-5820-554-24P-4

(1) ILLUSTRATION		(2)	(3)	(4)	(5)	(6)	(7)	(8)
(a) FIG NO.	(b) ITEM NO.	SMR CODE	NATIONAL STOCK NUMBER	PART NUMBER	FSCM	DESCRIPTION <i>USABLE ON CODE</i>	U/M	QTY INC IN UNIT
						GROUP 00 POWER SUPPLY MP-1		
9	1	XDFZZ		549-3322-004	13499	COVER, POWER SUPPLY.....5HZ	EA	1
9	2	XDFZZ	5305-00-054-6652	MS51957-28	96906	SCREW, MACHINE.....5HZ	EA	4
9	3	XDFZZ	5310-00-782-1349	310-0045-00	79807	WASHER, FLAT5HZ	EA	4
9	4	PAFZZ	5325-00-276-6096	MS35489-74	96906	GROMMET, RUBBER5HZ	EA	1
9	5	XDFFF		549-3320-004	13499	CHASSIS, ELEC EQPT.....5HZ	EA	1

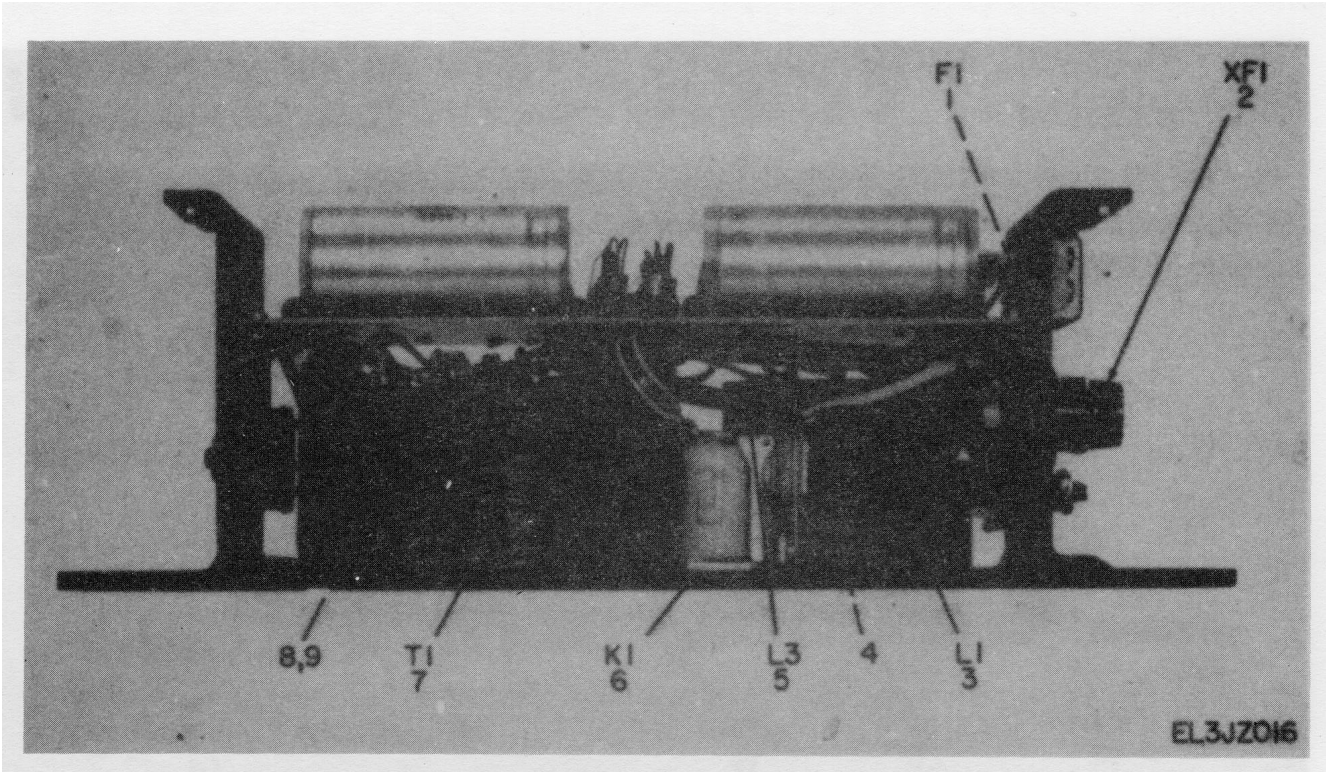


Figure 10. Power Supply MP-1, Left and Right Views (Sheet 1 of 2).

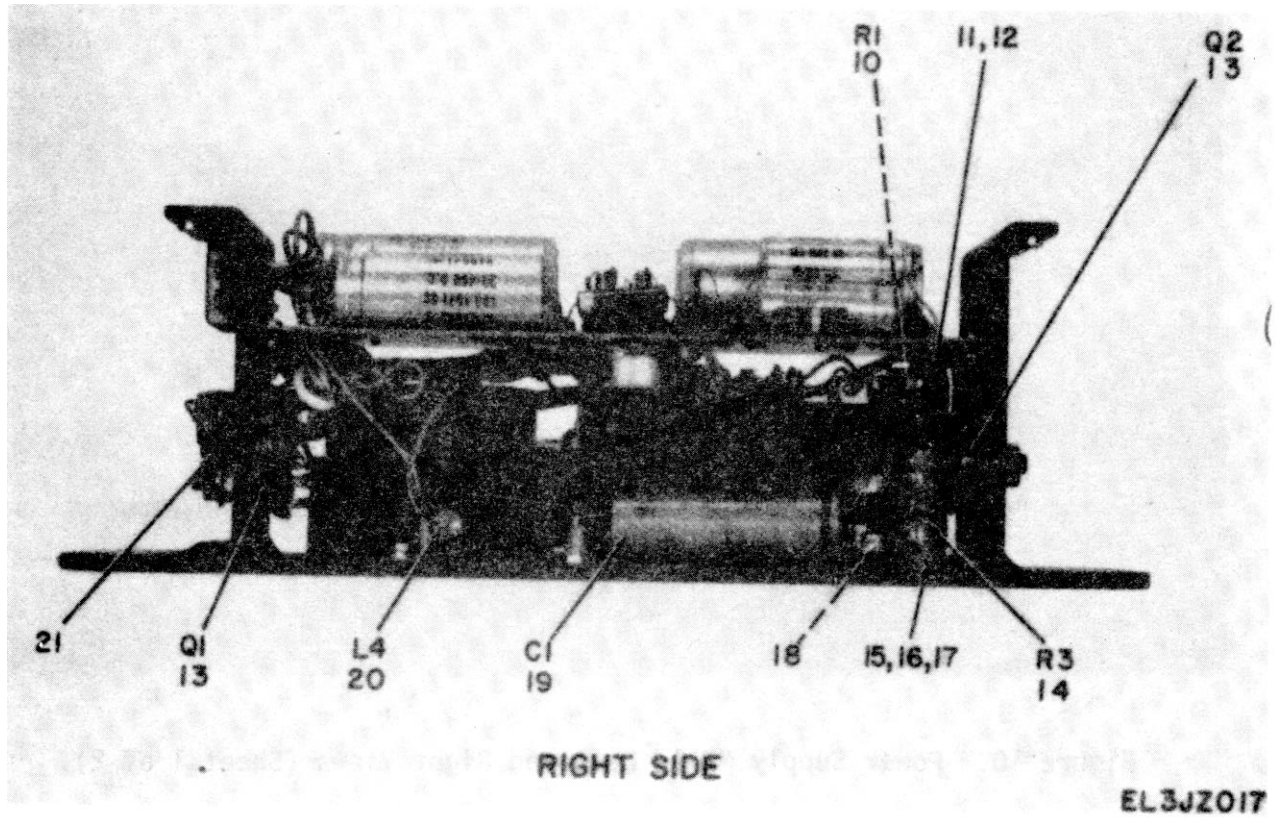


Figure 10. Power Supply MP-1, Left and Right Views (Sheet 2 of 2).

(1) ILLUSTRATION		(2)	(3)	(4)	(5)	(6)	(7)	(8)
(a) FIG NO.	(b) ITEM NO.	SMR CODE	NATIONAL STOCK NUMBER	PART NUMBER	FSCM	DESCRIPTION USABLE ON CODE	U/M	QTY INC IN UNIT
10	1	XDOZZ		AGC32-30	71400	FUSE CARTRIDGE5HZ	EA	1
10	2	XDFZZ		HKP1-1-4X1-4	71400	FUSEHOLDER5HZ	EA	1
10	3	XDFZZ		91097	12338	CHOKE5HZ	EA	1
10	4	XDFZZ		P342-0405-00	77250	SCREW, MACHINE.....5HZ	EA	3
10	5	XDFZZ		91085	12338	CHOKE5HZ	EA	1
10	6	PAFZZ	5945-00-990-8500	K03D12VDC	85143	RELAY, ELECTROMAGNET5HZ	EA	1
10	7	PAFZZ	5950-00-020-9000	10354483	12338	TRANSFORMER, POWER5HZ	EA	1
10	8	XDFZZ	5310-00-982-5064	MS2104483	96906	NUT, SELF-LOCKING, HE.....5HZ	EA	1
10	9	XDFZZ		MS35201-64	96906	SCREW, MACHINE.....5HZ	EA	1
10	10	PAFZZ	5905-00-100-3963	0200K	44655	RESISTOR, FIXED,WIRE.....5HZ	EA	1
10	11	XDFZZ	5310-00-489-7726	A6-120	25472	NUT, PLAIN, BLIND RIV5HZ	EA	1
10	12	XDFZZ	5970-00-237-5672	1210	70494	INSULATOR, BUSHING5HZ	EA	1
10	13	PAFZZ	5951-00-061-2987	DA3F3	21845	TRANSISTOR.....5HZ	EA	2
10	14	XDFZZ		HL10-50R00J	91637	RESISTOR, FIXED, WIRE.....5HZ	EA	1
10	15	XDFZZ		MS35649-64	96906	NUT, PLAIN, HEX5HZ	EA	1
10	16	XDFZZ	5305-00-765-4344	MS51959-36	96906	SCREW,MACHINE.....5HZ	EA	1
10	17	XDFZZ		302-1000-00	74921	WASHER, NM5HZ	EA	2
10	18	XDFZZ		1322	70485	RUBBER, CHANNEL5HZ	EA	1
10	19	PAFZZ	5910-00-465-9829	D25814	56289	CAPACITOR, FIXED, ELE.....5HZ	EA	1
10	20	PAFZZ	5950-00-823-3222	LTTK210	81349	COIL, RADIO5HZ	EA	1
10	21	PAFZZ	5961-00-711-2343	HP35WIC	03877	MOUNTING KIT5HZ	EA	1

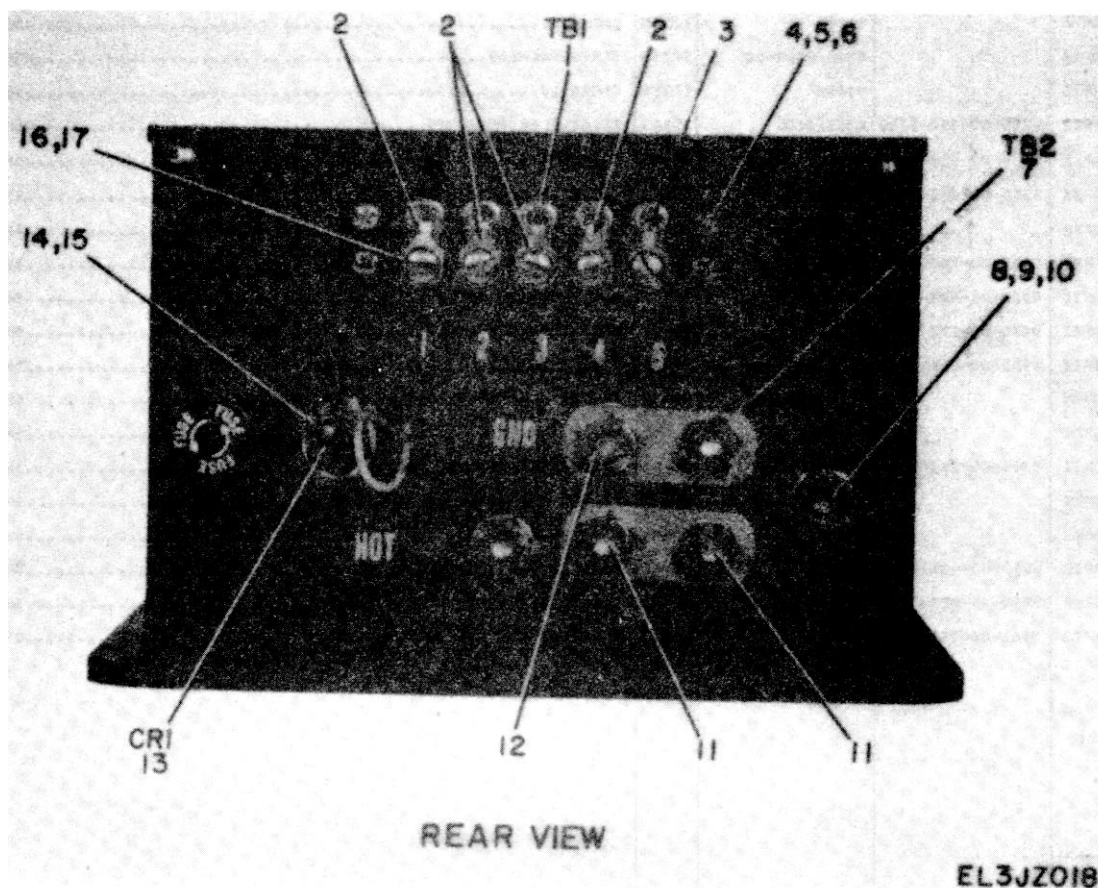


Figure 11. Power Supply MP-1, Rear View.

SECTION II

TM 11-5820-554-24P-4

(1) ILLUSTRATION		(2)	(3)	(4)	(5)	(6)	(7)	(8)
(a) FIG NO.	(b) ITEM NO.	SMR CODE	NATIONAL STOCK NUMBER	PART NUMBER	FSCM	DESCRIPTION USABLE ON CODE	U/M	QTY INC IN UNIT
11	1	XDFZZ		353-18-05-001	71735	TERMINAL, BOARD5HZ	EA	
11	2	XDFZZ		2041-10-032	77147	TERMINAL, LUG5HZ	EA	4
11	3	XDFZZ		2017-10HOTTINNED	77147	TERMINAL, LUG5HZ	EA	1
11	4	XDFZZ	5310-00-493-1743	P313-0132-00	77250	NUT,PLAIN, HEXACON.....5HZ	EA	4
11	5	XOFZZ	5305-00-054-5651	MS51957-17	96906	SCREW, MACHIHE.....5HZ	EA	4
11	6	XOFZZ	5310-00-580-3034	302-0024-00	05284	WASHER, FLAT5HZ	EA	4
11	7	XOFZZ	5940-00-229-9644	1520A	71785	TERMINAL, BOARD.....5HZ	EA	1
11	8	XOFZZ	5310-00-616-8660	P313-0045	77250	NUT, PLAIN, HEX5HZ	EA	1
11	9	XOFZZ	5305-00-763-6963	MS51959-28	96906	SCREW, MACHINE.....5HZ	EA	1
11	10	XDFZZ	5310-00-929 6395	MS35338-136	96906	WASHER, LOCK5HZ	EA	1
11	11	XDFZZ	.	54GOTTINNED	79963	TERMINAL, LUG5HZ	EA	2
11	12	XDFZZ	5940-00-259-8457	RTMT12M	91663	TERMI NAL, STUD.....5HZ	EA	1
11	13	PAFZZ	5961-00-617-4661	IN1115	07688	SEMICONDUCTOR DEVIC5HZ	EA	1
11	14	XDFZZ		P313-0056-00	77250	NUT, SPECIAL.....5HZ	EA	16
11	15	XDFZZ	5310-00-688-0245	310-0059-00	13499	WASHER, FLAT.....5HZ	EA	9
11	16	XDFZZ		P343-0350-00	77250	SCREW, MACHINE.....5HZ	EA	5
11	17	XDFZZ	5310-00-933-8120	310-0073-000	79807	WASHER, LOCK.....5HZ	EA	5

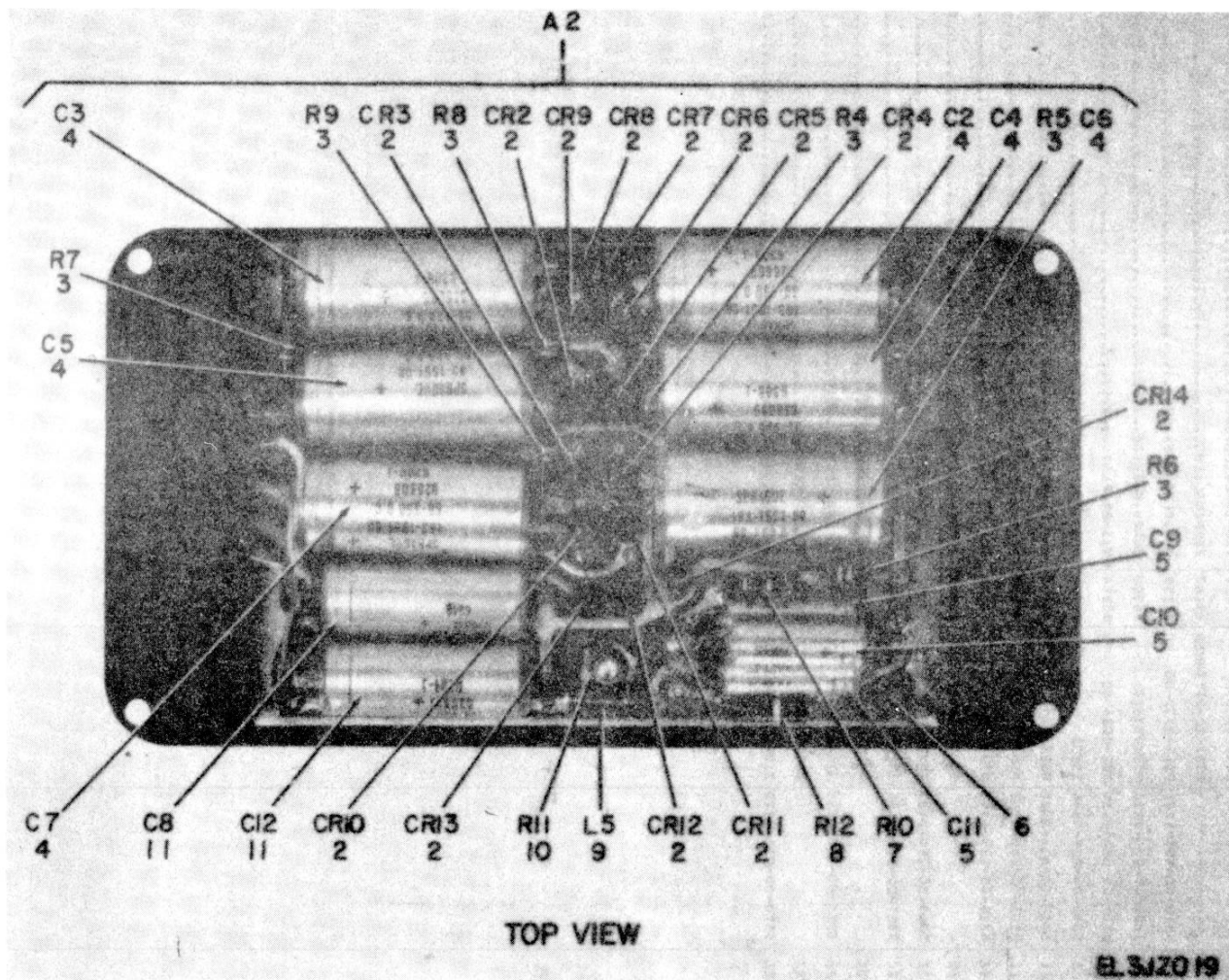
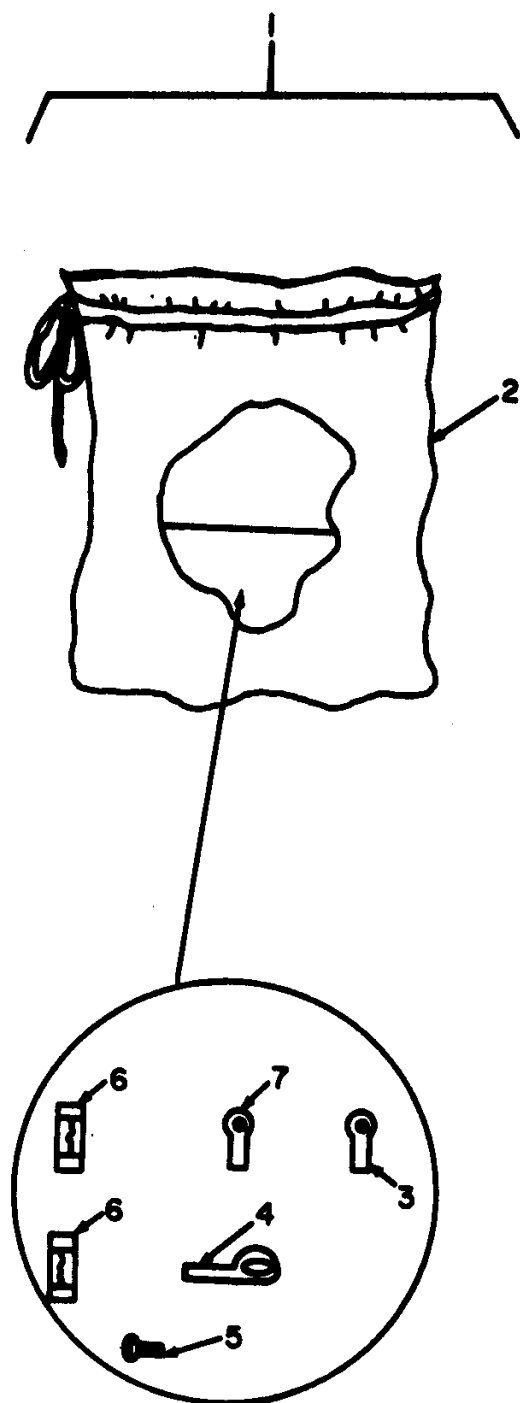


Figure 12. Power Supply MP-1, Top View.

SECTION II

TM 11-5820-554-24P-4

(1) ILLUSTRATION		(2)	(3)	(4)	(5)	(6)	(7)	(8)
(a) FIG NO.	(b) ITEM NO.	SMR CODE	NATIONAL STOCK NUMBER	PART NUMBER	FSCM	DESCRIPTION USABLE ON CODE	U/M	QTY INC IN UNIT
12	1	XDFFF		549-3318-003	13499	BOARD, PC.....5HZ	EA	1
12	2	PAFZZ	5961-00-810-4572	1N1491	80131	SEMICONDUCTOR DEVIC5HZ	EA	13
12	3	PAFZZ	5905-00-279-1714	RG32GF224K	81349	RESISTOR, FIXED, .COMP.....5HZ	EA	6
12	4	PAFZZ	5910-00-086-2089	D26608	56289	CAPACITOR, FIXED, ELE.....5HZ	EA	6
12	5	PAFZZ	5910-00-126-7220	D33646	56289	CAPACITOR, ELECTRICA.5HZ	EA	3
12	6	XDFZZ		549-3317-003	13499	PRINTED CIRCUIT BOA5HZ	EA	1
12	7	PAFZZ	5905-00-258-6558	RC32GF470K	81349	RESISTOR, FIXED, COMP.....5HZ	EA	1
12	8	PAFZZ	5905-00-279-2295	RC42GF682K	81349	RESISTOR, FIXED, C.....5HZ	EA	1
12	9	PAFZZ	5950-00-823-3222	LT7K210	81349	COIL, RADIO TASK 4A5HZ	EA	1
12	10	XDFZZ		LQ8338	71450	RESISTOR, VAR5HZ	EA	1
12	11	PAFZZ	5910-00-985-2852	183-1571.00	13499	CAPACITOR, ELECTLT5HZ	EA	2



EL3JZ020

Figure 13. Power Supply MP-1, Accessory Kit.

(1) ILLUSTRATION		(2)	(3)	(4)	(5)	(6)	(7)	(8)
(a) FIG NO.	(b) ITEM NO.	SMR CODE	NATIONAL STOCK NUMBER	PART NUMBER	FSCM	DESCRIPTION <i>USABLE ON CODE</i>	U/M	QTY INC IN UNIT
13	1	XDFFF		549-3312-000	13499	KIT, ACCESSORY5HZ	EA	1
13	2	XDFZZ		4X6-004	56339	BAG, PLASTIC5HZ	EA	1
13	3	XDFZZ		2017-10HOTTINNED	77147	TERMINAL LUG5HZ	EA	4
13	4	XDFZZ	5940-00-003-6667	HP8N	09922	CLAMP, LOOP5HZ	EA	1
13	5	XDFZZ		PK85XA12-16-1	45722	SCREW, TPG, THO5HZ	EA	4
13	6	XDOZZ		AGC32-30	71400	FUSE, CARTRIDGE5HZ	EA	2
13	7	XDFZZ	5940-00-194-4203	2041-10-032HOTTINNED	77147	TERMINAL, LUG5HZ	EA	1

SECTION IV NATIONAL STOCK NUMBER AND PART NUMBER INDEX TM 11-5820-554-24P-4
 NOTE: LATEST NATIONAL STOCK NUMBER AND PART NUMBER ASSIGNMENTS ARE INCLUDED AT END OF INDEX.

STOCK NUMBER	FIGURE NO.	ITEM NO.	STOCK NUMBER	FIGURE NO.	ITEM NO.
5340-00-003-6667	13	4	5905-00-279-2303	6	47
5950-00-020-9000	10	7	5905-00-279-3416	8	4
5310-00-042-6758	7	14	5910-00-280-9164	6	59
5310-00-042-9067	3	41	5920-00-281-0210	2	3
			5920-00-281-0210	4	4
5950-00-044-5064	8	29	5310-00-283-0710	7	10
5950-00-044-5069	8	34			
5305-00-054-5646	7	33	5920-00-284-7466	6	22
5305-00-054-5647	7	37	5320-00-286-4258	3	38
5305-00-054-5648	6	63	5325-00-286-6047	3	10
5305-00-054-5648	7	17	5325-00-291-9366	3	56
			5905-00-299-1997	8	3
5305-00-054-5650	7	31	5905-00-299-1997	8	13
5305-00-054-5651	11	5	5961-00-465-4405	3	3
5305-00-054-5653	7	41	5910-00-465-9829	10	19
5305-00-054-6650	2	6	5920-00-474-6125	2	4
5305-00-054-6651	3	34	5920-00-474-6125	4	3
5305-00-054-6651	5	5	5905-00-478-4327	6	49
5305-00-054-6652	6	6	5310-00-489-7726	10	11
5305-00-054-6652	9	2	5310-00-493-1743	11	4
5305-00-054-6653	3	29	5305-00-495-5558	3	23
5305-00-054-6655	5	6	6130-00-500-0412	6	51
5305-00-054-6660	5	13	5940-00-501-8634	6	26
5305-00-054-6668	3	20	5960-00-508-1047	6	13
5305-00-054-6669	7	25	5310-00-531-9514	3	27
5305-00-054-6671	7	6	5310-00-531-9514	6	55
5305-00-059-3659	6	35	5940-00-549-2727	3	9
5910-00-060-6318	8	22	5310-00-576-0546	3	44
5961-00-061-2987	10	13	5310-00-580-3034	11	6
5950-00-062-1122	6	39	5310-00-616-3555	6	7
5940-00-063-8843	3	7	5961-00-617-4661	11	13
5950-00-080-5306	3	55	5930-00-655-1582	3	49
5950-00-083-1622	6	2	5310-00-655-9677	3	45
5910-00-086-2089	8	5	5910-00-668-3141	6	46
5910-00-086-2089	12	4	5961-00-679-5290	8	6
5940-00-087-6275	6	52	5310-00-680-4919	3	50
5950-00-088-6525	3	53	5960-00-681-9741	6	8
5905-00-100-3963	10	10	5310-00-685-1450	6	37
5905-00-100-8029	6	20	5940-00-685-8974	3	22
5905-00-113-7346	8	20	5365-00-695-2558	7	5
5910-00-121-5090	b	43	5935-00-728-3077	2	14
5910-00-126-7220	12	5	5305-00-763-6963	11	9
5905-00-145-9617	8	21	5305-00-765-4344	10	16
5940-00-155-7072	6	40	5305-00-770-2579	2	16
5940-00-171-0246	8	7	5910-00-776-9064	8	31
5325-00-174-5317	3	21	5310-00-782-1349	9	3
5910-00-174-9207	3	52	6150-00-809-8126	2	5
5325-00-185-0012	S	62	5961-00-810-4572	12	2
5905-00-186-3008	6	50	5961-00-811-4842	8	2
5305-00-207-1385	2	13	5950-00-823-3222	10	20
5310-00-209-0330	2	17	5950-00-823-3222	12	9
5950-00-228-8640	8	32	5950-00-845-1255	8	14
5940-00-229-9644	3	25	5310-00-857-5547	7	27
5940-00-229-9644	11	7	5905-00-857-7865	8	11
5970-00-237-5672	6	56	5905-00-877-7094	8	19
5970-00-237-5672	10	12	5910-00-878-5258	3	39
5905-00-244-7911	8	30	5310-00-883-5931	7	3
5905-00-244-8258	8	24	5935-00-892-9148	6	34
5310-00-245-4718	3	46	6145-00-900-9413	6	12
5310-00-245-4719	4	12	5995-00-901-1105	6	9
5975-00-246-4906	3	48	5935-00-901-4356	6	11
5305-00-252-9666	3	47	5910-00-901-4381	6	44
5905-00-258-6558	12	7	5310-00-929-6395	2	7
5935-00-259-1008	6	10	5310-00-929-6395	3	33
5940-00-259-8457	11	12	5310-00-929-6395	5	12
			5310-00-929-6395	11	10
			5310-00-933-8118	6	65
5310-00-261-8278	7	3	5310-00-933-8118	7	30
5340-00-264-7182	5	8	5310-00-933-8119	6	4
5310-00-270-8810	6	36	5310-00-933-8120	11	17
5975-00-273-0788	6	24	5310-00-934-9759	3	42
5310-00-275-1347	5	11	5310-00-934-9761	3	28
5310-00-275-5147	4	13	5310-00-934-9766	7	2
5310-00-275-5147	6	32	5910-00-941-8234	3	16
5325-00-276-6096	9	4	5340-00-945-1027	3	19
5905-00-279-1692	8	25	5905-00-951-1591	3	12
5905-00-279-1714	8	12	5965-00-964-1756	3	30
			5355-00-971-9302	4	9
5905-00-279-1714	12	3	5820-00-974-3142	5	7
5905-00-279-2295	12	8	9390-00-974-8533	2	9

SECTION IV

NATIONAL STOCK NUMBER AND PART NUMBER INDEX TM 11-5820-554-24P-4

STOCK NUMBER	FIGURE NO.	ITEM NO.	STOCK NUMBER	FIGURE NO.	ITEM NO.
5340-00-975-1440	3	26	5995-00-984-5241	2	18
5340-00-975-1440	6	57	5970-00-984-9061	3	17
5340-00-975-5763	4	7	5935-00-989-5315	2	15
5310-00-976-0274	5	15	5945-00-990-8500	10	6
5820-00-980-6500	3	5	5950-01-004-7256	8	17
5310-00-982-5064	10	8	5905-01-054-5383	3	2

PART NUMBER	FSCM	FIG. NO.	ITEM NO.	PART NUMBER	FSCM	FIG. NO.	ITEM NO.
AGC32-30	71400	10	1	MS35650-104	96906	6	36
AGC32-30	71400	13	6	MS51957-14	96906	6	63
A15390	97965	6	5	MS51957-17	96906	11	5
A6-120	25472	10	11	MS51957-26	96906	2	6
BC-2260	97315	8	29	MS51957-27	96906	3	34
BC-2262	97315	8	28	MS51957-27	96906	5	5
BS82524G	14370	3	54	MS51957-28	96906	6	6
CD20XD-203W	81112	8	27	MS51957-28	96906	9	2
CL632-2C	46384	3	50	MS51957-29	96906	3	29
CL832-2C	46384	3	45	MS51957-31	96906	5	6
CP29A1EG503K	81349	6	59	MS51957-36	96906	5	13
C1338SS010	78553	5	15	MS51957-43	96906	3	20
DA3F3	21845	10	13	MS51958-63	96906	6	35
D25814	56289	10	19	MS51959-15	96906	2	16
D26608	56289	12	4	MS51959-28	96906	11	9
D28166	56289	6	67	MS51959-36	96906	10	16
D28167	56289	6	44	M11F19207-16	81349	8	9
D33646	56289	12	5	PK75X86-4-1	45722	6	41
D37320	56289	3	16	PK85XA12-16-1	45722	13	5
E13662	32712	6	2	P312-0062-00	77250	6	27
E26A817	04222	3	15	P313-0045	77250	11	8
E26A817	04222	6	42	P313-0054-000	77250	3	24
ES0003-041	80033	6	43	P313-0056-00	77250	11	14
E50007-041	80033	6	68	P313-0064-000	77250	2	11
E50008-041	80033	6	45	P313-0132-00	77250	11	4
F02A250V2AS	81349	2	4	P334-4120-00	77250	4	13
F02A250V2AS	81349	4	3	P334-4120-00	77250	6	32
F02A250V4AS	81349	2	3	P342-0405-00	77250	10	4
F02A250V4AS	81349	4	4	P343-0309-000	77250	3	23
HKP1 1-4X1-4	71400	2	8	P343-0311-00	77250	6	14
HKP1-1-4X1-4	71400	10	2	P343-0311-000	77250	3	47
HKP11-4X1-4	71400	6	21	P343-0350-00	77250	11	16
HL10-50R00J	91637	10	14	RCR32G332JS	81349	8	24
HP35WIC	03877	10	21	RCR32G392KS	81349	3	2
HP6N	09922	3	26	RCR32G470JS	81349	8	20
HP6N	09922	6	57				
HP8N	09922	13	4				
KD3D12VDC	85143	10	6				
KH3491	70903	6	30				
LO8338	71450	6	29	RCR32G682JS	81349	8	30
LO8338	71450	12	10				
LT7K210	81349	10	20	RCR42G222JS	81349	8	21
LT7K210	81349	12	9	RC20GF101K	81349	6	50
MDLI	71400	6	22	RC32GF100J	81349	8	25
MDX4	71400	6	22	RC32GF224K	81349	8	12
MS21044B3	96906	10	8				
MS35059-23	96906	3	49	RC32GF224K	81349	12	3
MS35201-64	96906	10	9	RC32GF274K	81349	8	3
MS35333-71	96906	b	7	RC32GF274K	81349	8	13
HS35338-135	96906	6	65	RC32GF470K	81349	12	7
HS35338-136	96906	2	7				
MS35338-136	96906	3	33	RC42GF330J	81349	8	4
M 35338-136	96906	5	12	RC42GF332K	81349	6	49
M 35338-136	96906	11	10	RC42GF562K	81349	6	47
M 5338-137	96906	6	4	RC42GF682K	81349	12	8
M 5338-138	96906	6	38	RTMT12M	91663	11	12
M 35338-88	96906	3	44	RW67V200	81349	3	12
M 35489-1	96906	3	10	R4012X5-32PLAIN	12014	3	38
M 5489-11	96906	3	56	SR6P1	28520	6	24
M 35489-35	96906	6	62	SR6P4	28520	3	48
M 35489-4	96906	3	21	S10-862	04569	6	12
M 15489-43	96906	6	18	TC48	37942	8	31
M 35489-74	96906	9	4	TC52	37942	6	46
M 35549-264	96906	3	28	UP4445	14655	3	52
M 35649-284	96906	3	42	0047109	95265	8	8
				0200K	44655	10	10
M 35649-64	96906	5	9	0219	44655	6	20
M 35649-64	96906	6	54	IN1084	51589	8	2
M 35649-64	96906	10	15	1N1115	07688	11	13

SECTION IV

NATIONAL STOCK NUMBER AND PART NUMBER INDEX

TM11-5820-554-24P-4

PART NUMBER	FSCM	FIG. NO.	ITEM NO.	PART NUMBER	FSCM	FIG. NO.	ITEM NO.
1N1491	80131	12	2	334-4120-00	13499	7	39
1N4005	04713	3	3	335-0010-00	08664	6	13
10X610	04377	8	32	340-0642-00	13499	7	5
10354	12338	10	7	342-0062-00	13499	7	22
10404-36	06560	8	17				
1210	70494	6	56	343-0133-00	13499	7	37
1210	70494	10	12				
122-02CADPL	78189	6	31				
1300D	88245	3	9				
1322	70485	10	18	343-0139-00	13499	7	41
1330	71400	8	10				
139-0090-000	13499	3	39	343-0173-00	13499	7	9
150-1542-00	13499	7	29				
1520A	71785	3	25				
1520A	71785	11	7				
1532A	71785	6	40	343-0189-00	13499	7	23
160P10494	56289	8	23				
168-013-1000	02660	6	58	343-0200-00	13499	7	28
				350	08556	6	34
				351	08556	4	8
17406	70903	6	5	353-18-05-001	71785	11	1
183-1551-00	13499	8	5	367-0016-00	13499	8	7
183-1656-00	13499	8	22	367-0819-00	13499	8	16
2B1DB12	92825	6	66	367-0829-00	13499	8	18
2DDH63N103M	71590	6	53				
2K40F24KPORM5PCT	44655	6	25	377-0310-000	12697	2	
2017-10HOTTINNED	77147	11	3	380-0614-00	13499	8	11
2017-10HOTTINNED	77147	13	3	38578	73386	6	39
2041-10-032	77147	11	6	4C1391	82389	2	18
2041-10-032HOTTINNED	77147	b	69				
2041-10-032HOTTINNED	77147	13	7	4X6-004	56339	13	2
2104-08-02-2520N	78189	3	22	4021	77147	6	26
240-0021-00	13499	8	33	4035-12HOTTINNED	77147	6	48
25AH30	82389	4	5	40410	73386	3	53
280-2970-000	13499	6	17	40412	73386	3	55
280-3423-00	13499	5	1	5R4GYA	33173	6	8
3-24	02660	6	10	5U4GB	54590	6	13
302-0024-00	05284	11	6	50	84970	6	51
302-0026-00	13499	7	10	500-2112-002	13499	7	21
				54GOTTINNED	79963	11	11
302-0051-00	13499	7	13	540-9464-003	13499	3	19
302-1000-00	74921	10	17	541-6095-002	13499	7	41
310-0045-00	79807	9	3	542-5732-0002	13499	7	32
310-0046-00	13499	7	11	542-5735-002	13499	7	8
				542-7572-002	13499	8	1
310-0046-00	79807	5	11	542-7573-002	13499	7	19
310-0049-00	79807	6	37	542-7577-003	13499	7	36
310-0052-000	79807	4	12	542-7579-00	13499	7	34
310-0054-000	79807	6	17	542-7581-004	13499	7	1
310-0057-000	79807	3	40	542-7590-00	13499	7	28
310-0058-00	79807	6	15	542-7794-002	13499	4	10
310-0058-000	79807	3	46	543-2811-003	13499	7	7
310-0059-00	13499	11	15	543-8101-002	13499	5	7
310-0072-00	13499	7	4	543-8116-000	13499	5	10
310-0073-000	79807	11	17	544-2855-000	13499	6	9
310-0079-00	79807	6	16	544-2856-000	13499	6	1
310-0080-00	13499	7	3	544-2857-002	13499	6	23
310-0279-00	13499	7	30	544-2858-002	13499	6	19
310-0283-000	70318	3	41	544-2860-003	13499	5	3
				544-2861-003	13499	5	6
310-0288-00	13499	7	14	544-2862-003	13499	6	28
310-0447-000	79807	3	37	544-2864-003	13499	6	33
310-6360-00	79807	6	55	544-2868-005	13499	5	1
310-6360-000	79807	3	27	545-7688-002	13499	4	7
313-0045-00	13499	7	12	545-7702-002	13499	4	9
				545-7705-002	13499	6	1
				548-9440-002	13499	6	9
				548-9441-002	13499	3	31
313-0148-00	13499	7	15	548-9442-002	13499	3	17
325-0051-00	13499	7	20	548-9445-003	13499	3	5
330-2420-000	13499	5	2	548-9446-003	13499	3	7
332-14-02-001	71785	6	52	548-9447-003	13499	3	6
332-14-03-017	71785	3	8	548-9448-003	13499	3	13
332-14-04-037	71785	3	11	548-9449-003	13499	3	30
332-1403-165	71785	3	35	548-9450-003	13499	6	14
332-1403-165	71785	6	61	548-9451-004	13499	2	2
333-0347-00	13499	7	18	548-9452-004	13499	1	1
				548-9454-005	13499	1	2
333-0368-00	13499	7	27	548-9455-005	13499	3	51
333-0381-00	13499	7	24	548-9456-005	13499	6	20

SECTION IV

NATIONAL STOCK NUMBER AND PART NUMBER INDEX

TM 11-5820-554-24P-4

PART NUMBER	FSCM	FIG. NO.	ITEM NO.	PART NUMBER	FSCM	FIG. NO.	ITEM NO.
548-9457-000	33499	4	1	745-3373-00	13499	8	26
549-3312-000	13499	13	1	747-5103-00	13499	8	19
549-3317-003	13499	12	6	747R	75543	5	8
549-3318-003	13499	6	1	757-4785-000	13499	2	19
553-5697-002	13499	4	11	779-2951-001	13499	3	36
5829	74545	6	34	78S11M1005	02660	6	13
664-0284-00	13499	8	34	9105B 77969	2	12	
668-0270-00	13499	8	14	91085 12338	10	5	
7276207	16758	8	6	91097 12338	10	3	
73-5947	74199	3	32	970-1875-00	13499	8	15

LATEST NATIONAL STOCK NUMBER ASSIGNMENTS

STOCK NUMBER	FIG. NO.	ITEM NO.
5305-00-054-6652	7	35
5305-00-054-6660	7	16
5905-00-104-8353	3	1
5905-00-113-7346	3	4
5940-00-194-4203	6	69
5940-00-194-4203	13	7
5905-00-252-1047	3	18
5905-00-279-1921	6	60
5310-00-616-8660	11	8
5310-00-688-0245	11	15
5961-00-711-2343	10	21
5905-00-759-8896	3	14
5325-00-795-0719	6	18
5910-00-819-2577	8	23
5310-00-883-5931	2	10
5310-00-883-5931	4	2
5310-00-934-9748	6	64
5310-00-934-9759	6	3
5310-00-934-9761	5	9
5995-00-951-0026	4	6
5910-00-985-2852	12	1

LATEST PART NUMBER ASSIGNMENTS

PART NUMBER	FSCM	FIG. NO.	ITEM NO.
MS35649-244	96906	6	64
MS35649-284	96906	6	3
MS35650-305	96906	7	2
MS51957-12	96906	7	33
MS51957-14	96906	7	17
MS51957-16	96906	7	31
MS51957-28	96906	7	35
MS51957-36	96906	7	16
MS51957-44	96906	7	25
MS51957-46	96906	7	6
RCR32G274JS	81349	3	18
RCR32G470JS	81349	3	4
RCR32G472JS	81349	3	1
RCR42G104JS	81349	3	14
RC42GF274J	81349	6	60
183-1571-00	13499	12	11
410894-38	96214	2	10
410894-38	96214	4	2
410894-38	96214	7	38
4C1520A	82389	4	6
549-3320-004	13499	9	5
549-3322-004	13499	9	1

RECOMMENDED CHANGES TO EQUIPMENT TECHNICAL PUBLICATIONS



THEN...JOT DOWN THE DOPE ABOUT IT ON THIS FORM. CAREFULLY TEAR IT OUT, FOLD IT AND DROP IT IN THE MAIL.

SOMETHING WRONG WITH PUBLICATION

FROM: (PRINT YOUR UNIT'S COMPLETE ADDRESS)

DATE SENT

PUBLICATION NUMBER

PUBLICATION DATE

PUBLICATION TITLE

BE EXACT PIN-POINT WHERE IT IS

PAGE NO.	PARA-GRAPH	FIGURE NO.	TABLE NO.

IN THIS SPACE, TELL WHAT IS WRONG AND WHAT SHOULD BE DONE ABOUT IT.

TEAR ALONG PERFORATED LINE

PRINTED NAME, GRADE OR TITLE AND TELEPHONE NUMBER

SIGN HERE

DA FORM 1 JUL 79 2028-2

PREVIOUS EDITIONS ARE OBSOLETE.

P.S.--IF YOUR OUTFIT WANTS TO KNOW ABOUT YOUR RECOMMENDATION MAKE A CARBON COPY OF THIS AND GIVE IT TO YOUR HEADQUARTERS.

By Order of the Secretary of the Army:

E. C. MEYER
General, United States Army
Chief of Staff

Official:

J. C. PENNINGTON
Major General, United States Army
The Adjutant General

Distribution:

To be distributed in accordance with DA Form 12-50, Organizational Maintenance Requirements for AN/FRC-93.

PIN: 048134-000